

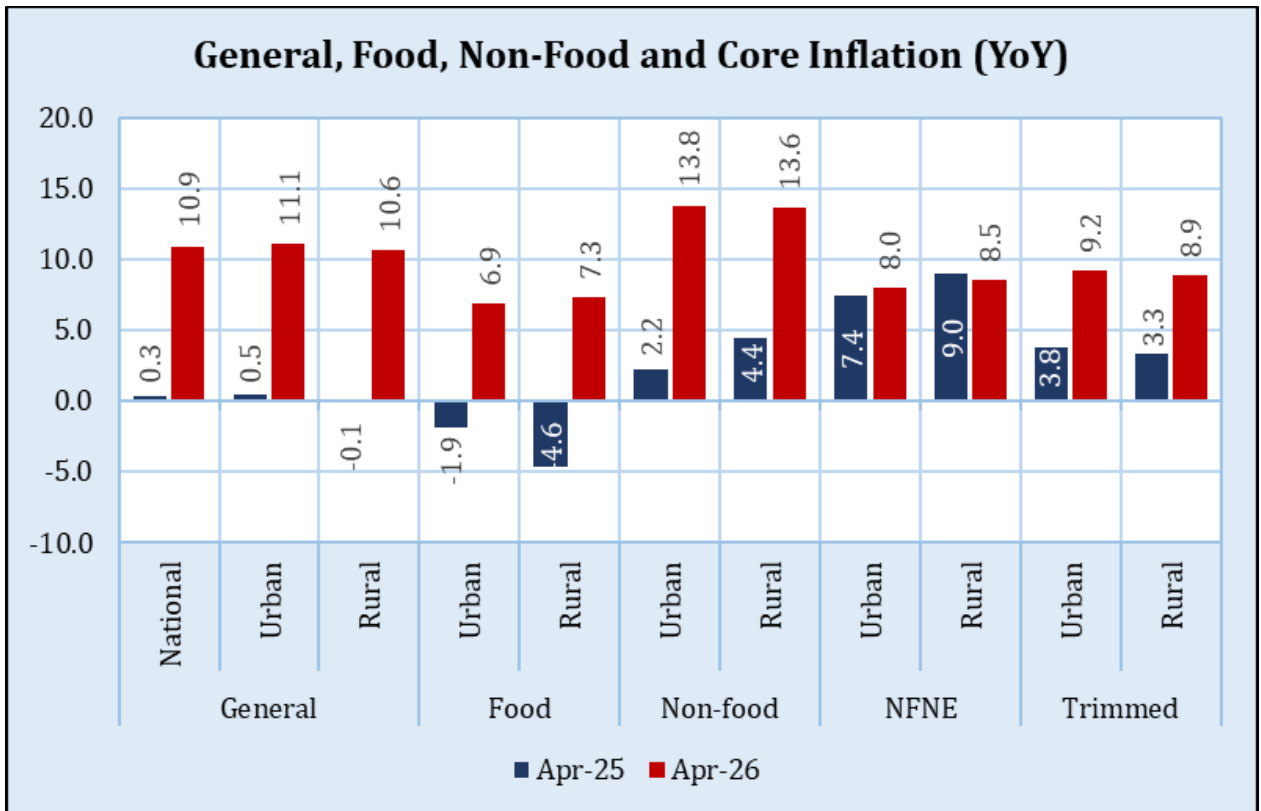


State Bank of Pakistan

بینک دولت پاکستان

Inflation Monitor

April 2026



Statistics and Data Services Department



StateBankPakistan



StateBank_Pak



www.sbp.org.pk

SSN 1992-8335 (online)

The analysis in this document is based on data:

- provided by Pakistan Bureau of Statistics (PBS)
- retrieved from websites of Bloomberg, Trading Economics and World Bank



Scan the QR Code to access the Dashboard of Monthly Inflation Snapshot available on EasyData.

For feedback and queries: feedback.statistics@sbp.org.pk

Table of Contents

| | |
|--|----|
| Summary | 4 |
| 1. Inflation Trends | 6 |
| 1.1 CPI Inflation (YoY) | 6 |
| 1.2 Core Inflation (YoY) | 6 |
| 1.3 CPI Inflation (MoM) | 7 |
| 1.4 CPI, WPI and SPI Inflation (YoY) | 7 |
| 1.5 CPI Inflation (YoY) and Policy Rate | 8 |
| 1.6 CPI Inflation (YoY) and Currency in Circulation (CIC) Growth (YoY) | 8 |
| 1.7 CPI Inflation (YoY) and Large-Scale Manufacturing (LSM) Growth (YoY) | 9 |
| 1.8 CPI Inflation (MoM) and Appreciation/Depreciation of USD against PKR (MoM) | 10 |
| 2. Inflation Expectations | 11 |
| 2.1: Inflation Expectations (Quantitative) | 11 |
| 2.2: Inflation Expectations Index | 12 |
| 3. CPI Inflation (YoY) – Group-wise Impact (in % points) | 13 |
| 4. Growth of Average Monthly Prices of 51 Essential Items – April 2026 | 15 |
| 5. Inflation in Global Context | 16 |
| 5.1 Global Comparison | 16 |
| 5.2 Global Commodity Prices /Inflation | 17 |
| 6. Data Visuals | 19 |
| 6.1 CPI Inflation Heat Maps | 19 |
| 6.2 Group-wise CPI Inflation (YoY) | 20 |
| 6.3 Distribution of Price Changes (YoY) in Urban Basket | 21 |
| 6.4 Distribution of Price Changes (YoY) in Rural Basket | 21 |
| 6.5 National CPI Inflation since June | 22 |
| 6.6 Urban CPI Inflation since June | 22 |
| 6.7 Rural CPI Inflation since June | 23 |
| 6.8 Frequency Distribution of Price Changes of Urban CPI Items (YoY) | 24 |
| 6.9 Frequency Distribution of Price Changes of Rural CPI Items (YoY) | 25 |
| 6.10 Frequency Distribution of Price Changes of Urban CPI Items (MoM) | 26 |
| 6.11 Frequency Distribution of Price Changes of Rural CPI Items (MoM) | 27 |
| 6.12 Frequency Distribution of Price Changes of WPI Commodities (YoY) | 28 |
| 7. Data Tables | 29 |
| Table 7.1: National CPI Inflation by Groups (in percent) | 29 |
| Table 7.2: Urban CPI Inflation by Groups (in percent) | 30 |
| Table 7.3: Rural CPI Inflation by Groups (in percent) | 30 |
| Table 7.4: Top Ten Contributors to Urban CPI Inflation (YoY) – April 2026 | 31 |
| Table 7.5: Top Ten Contributors to Rural CPI Inflation (YoY) – April 2026 | 32 |
| Table 7.6: Inflation (CPI, WPI, SPI, Core) | 33 |
| Table 7.7: National CPI Inflation by Groups | 34 |
| Table 7.8: Urban CPI Inflation by Groups | 35 |
| Table 7.9: Rural CPI Inflation by Groups | 36 |
| Technical Notes | 37 |
| List of Abbreviations | 39 |

The Team

| | |
|------------------------|--------------------|
| Iqra Adeel | Assistant Director |
| Syed Aamir Ali Bokhari | Joint Director |

Publication Reviewer

| | |
|---------------------------|----------------|
| Mr. Shahid Hussain Javaid | Joint Director |
|---------------------------|----------------|

Publication Manager

| | |
|--------------------|-----------------------|
| Mirza Kaleem Ullah | Senior Joint Director |
|--------------------|-----------------------|

Director

| |
|-----------------|
| Dr. Waqas Ahmad |
|-----------------|

Summary

| Indicators | YoY | | | MoM | | |
|---------------------------------|--------|--------|--------|--------|--------|--------|
| | Apr-26 | Mar-26 | Apr-25 | Apr-26 | Mar-26 | Apr-25 |
| CPI Inflation | | | | | | |
| National | 10.9 | 7.3 | 0.3 | 2.5 | 1.2 | -0.8 |
| Urban | 11.1 | 7.4 | 0.5 | 2.7 | 1.3 | -0.7 |
| Rural | 10.6 | 7.2 | -0.1 | 2.1 | 1.0 | -1.0 |
| Core Inflation | | | | | | |
| Urban (NFNE) | 8.0 | 7.4 | 7.4 | 1.9 | 0.7 | 1.3 |
| Rural (NFNE) | 8.5 | 8.4 | 9.0 | 1.1 | 0.8 | 0.9 |
| Urban (Trimmed) | 9.2 | 5.9 | 3.8 | 1.1 | 0.6 | 0.3 |
| Rural (Trimmed) | 8.9 | 6.3 | 3.3 | 1.0 | 0.5 | -0.1 |
| WPI Inflation | 13.6 | 6.7 | -2.2 | 5.1 | 5.9 | -1.3 |
| SPI (Combined) Inflation | 12.6 | 6.6 | -3.2 | 3.6 | 2.2 | -1.9 |

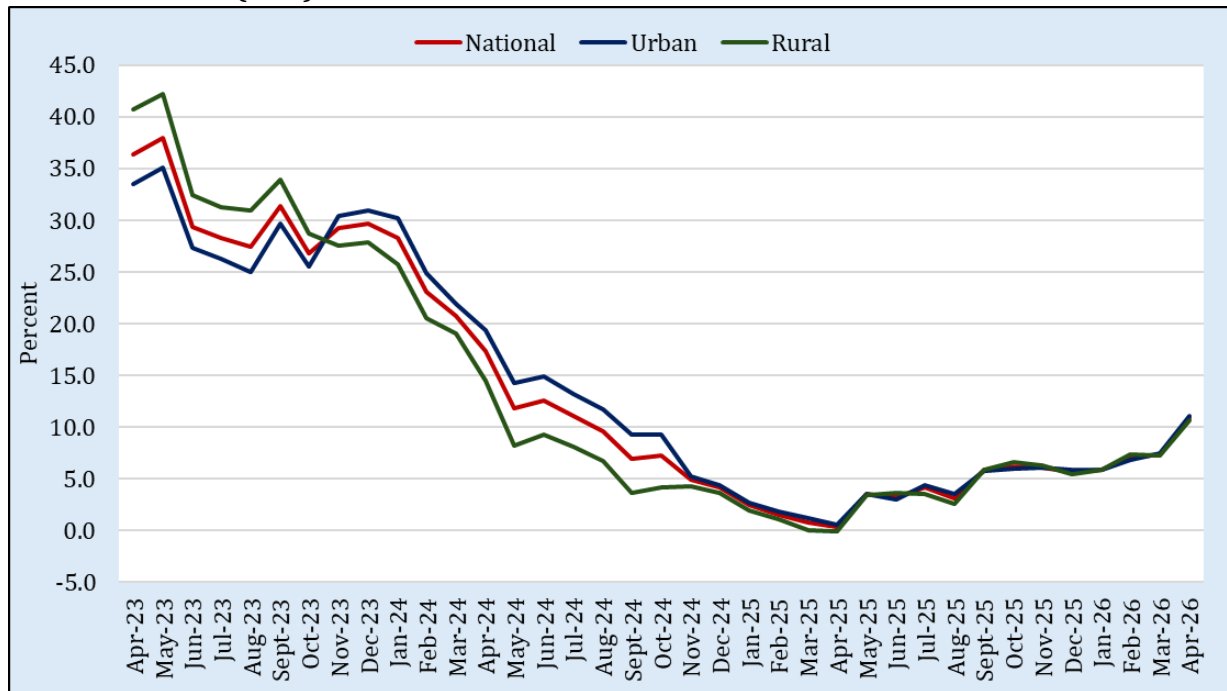
- I. National CPI Inflation (YoY) increased to 10.9 percent in April 2026 from 7.3 percent in the previous month. It stood at 0.3 percent during the corresponding month of last year. On MoM basis, National CPI Inflation increased to 2.5 percent in April 2026 from 1.2 percent in previous month. A deflation of 0.8 percent was observed during the corresponding month of last year.
- II. Urban CPI Inflation (YoY) increased to 11.1 percent in April 2026 from 7.4 percent in the previous month. It stood at 0.5 percent during the corresponding month of last year. On MoM basis, Urban CPI Inflation increased to 2.7 percent in April 2026 from 1.3 percent in previous month. A deflation of 0.7 percent was observed during the corresponding month of last year.
- III. Rural CPI Inflation (YoY) increased to 10.6 percent in April 2026 from 7.2 percent in the previous month. A deflation of 0.1 percent was observed during the corresponding month of last year. On MoM basis, it increased to 2.1 percent in April 2026 from 1.0 percent in previous month. A deflation of 1.0 percent was observed during the corresponding month of last year.
- IV. Urban Core (Non-food, Non-energy) Inflation (YoY) increased to 8.0 percent in April 2026 from 7.4 percent in the previous month. It stood at 7.4 percent in the corresponding month of the previous year. On MoM basis, it increased to 1.9 percent in April 2026 from 0.7 percent in previous month. It stood at 1.3 percent during the corresponding month of last year.
- V. Rural Core (Non-food, Non-energy) Inflation (YoY) increased to 8.5 percent in April 2026 from 8.4 percent in previous month. It stood at 9.0 percent during the corresponding month of last year. On MoM basis, it increased to 1.1 percent in April 2026 from 0.8 percent in the previous month. It stood at 0.9 percent during the corresponding month of last year.
- VI. Urban Core (trimmed) Inflation (YoY) increased to 9.2 percent in April 2026 from 5.9 percent in the previous month. It stood at 3.8 percent during the corresponding month of last year. On MoM basis, it increased to 1.1 percent in April 2026 from 0.6 percent in the previous month. During the corresponding month of the last year, it stood at 0.3 percent.
- VII. Rural Core (trimmed) Inflation (YoY) increased to 8.9 percent in April 2026 from 6.3 percent in the previous month. It stood at 3.3 percent in the corresponding month of last year. On

MoM basis, it increased to 1.0 percent in April 2026 from 0.5 percent in the previous month. A deflation of 0.1 percent was observed during corresponding month of last year.

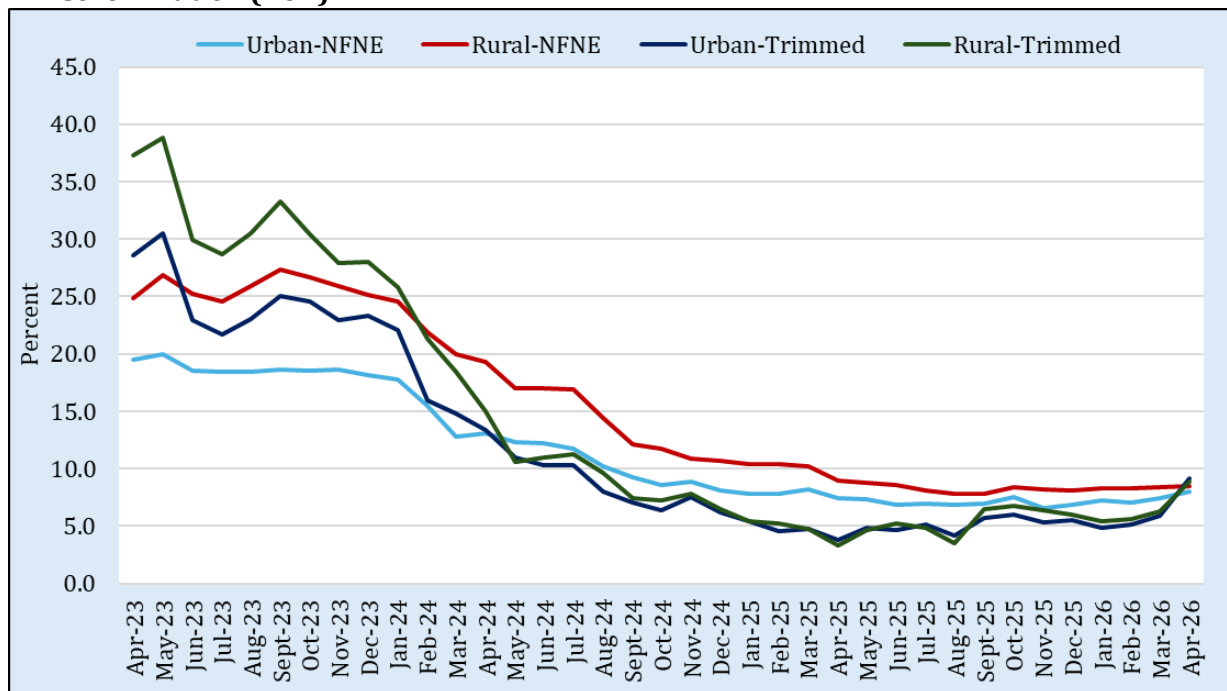
- VIII. WPI Inflation on YoY basis increased to 13.6 percent in April 2026 from 6.7 percent in the previous month. During the corresponding month of last year, a deflation of 2.2 percent was observed. On MoM basis, it decreased to 5.1 percent in April 2026 from 5.9 percent in the previous month. A deflation of 1.3 percent was observed during the corresponding month of last year.
- IX. SPI (Combined) Inflation on YoY basis increased to 12.6 percent in April 2026 from 6.6 percent in previous month. During the corresponding month of last year, a deflation of 3.2 percent was observed. On MoM basis, it increased to 3.6 percent in April 2026 from 2.2 percent in the previous month. A deflation of 1.9 percent was observed during the corresponding month of last year.

1. Inflation Trends

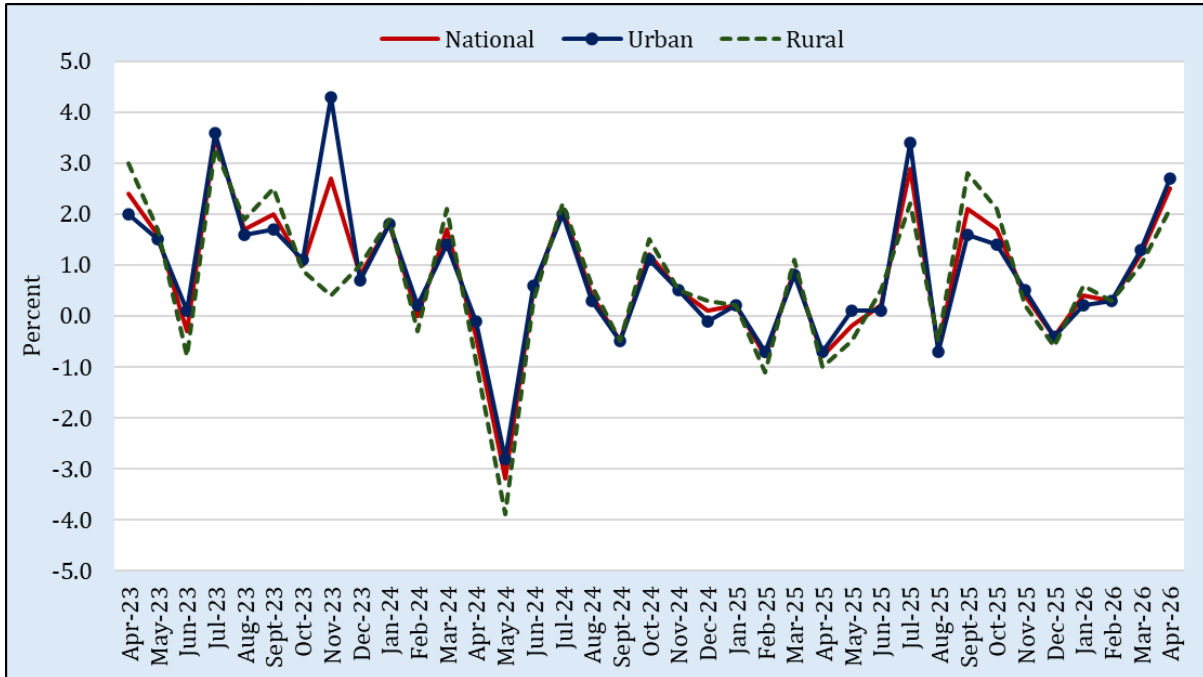
1.1 CPI Inflation (YoY)



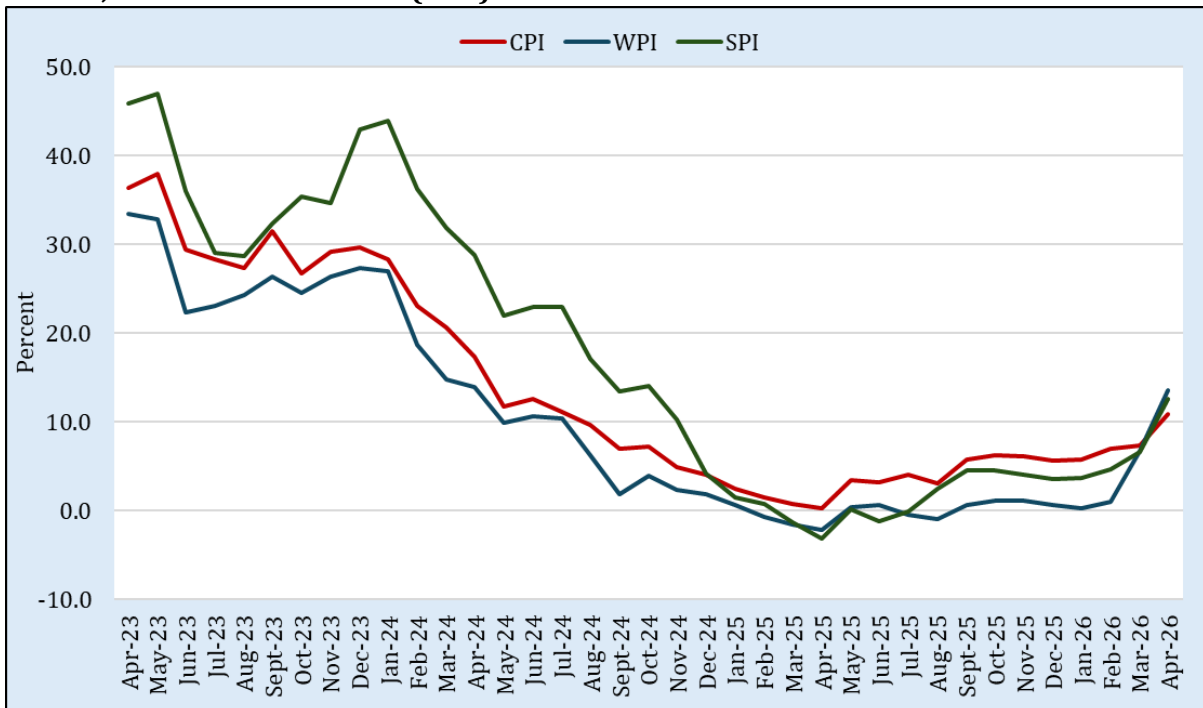
1.2 Core Inflation (YoY)



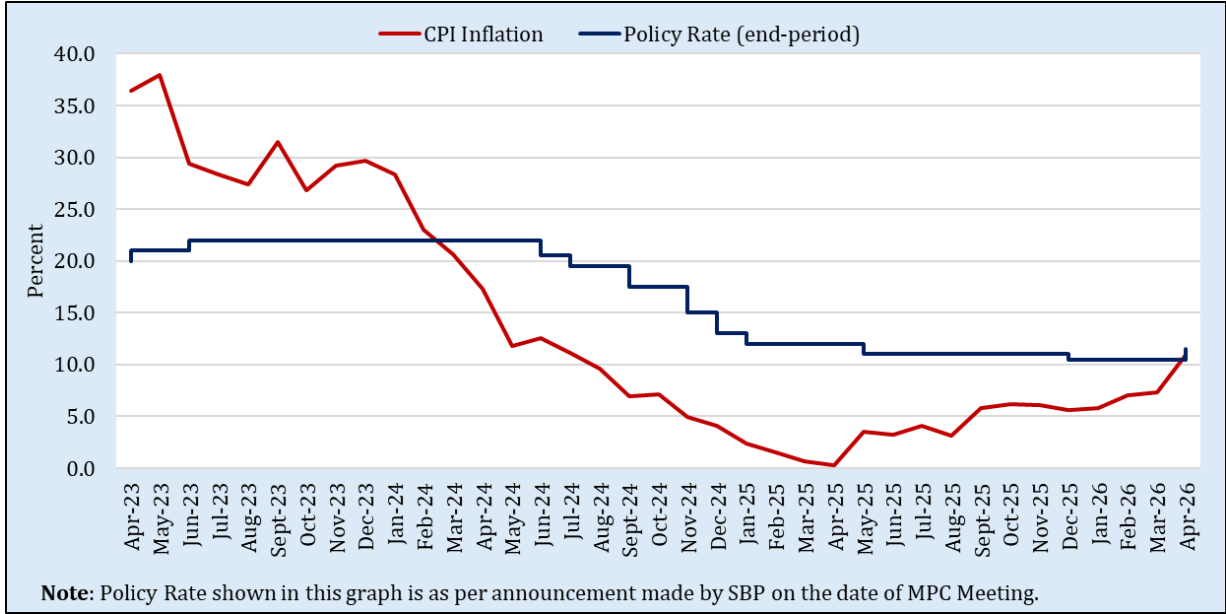
1.3 CPI Inflation (MoM)



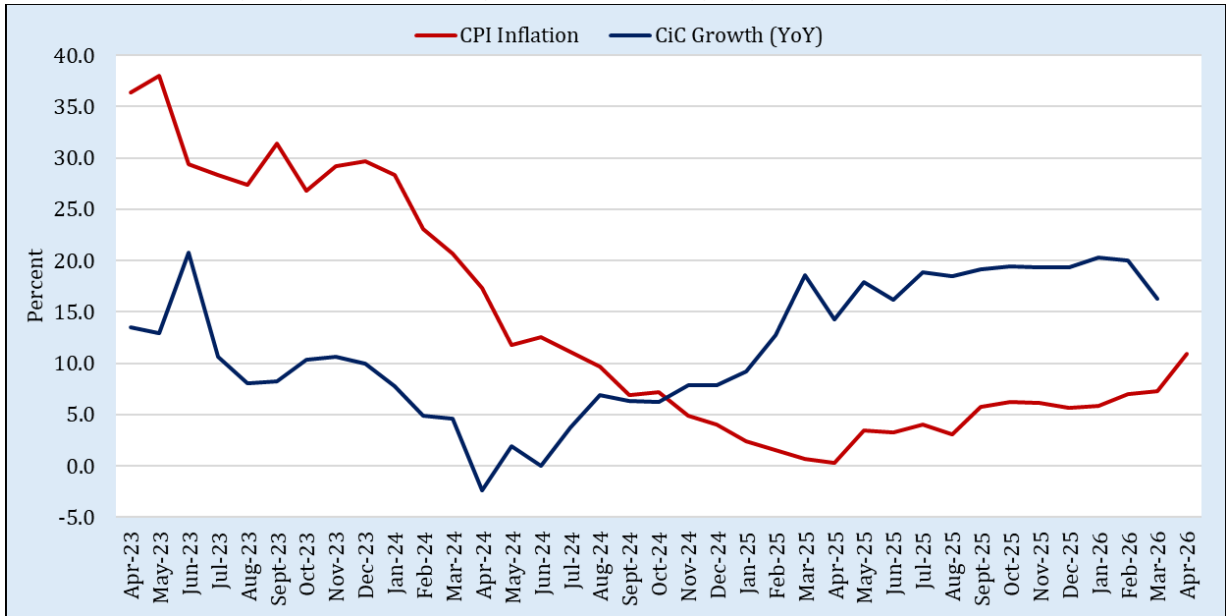
1.4 CPI, WPI and SPI Inflation (YoY)



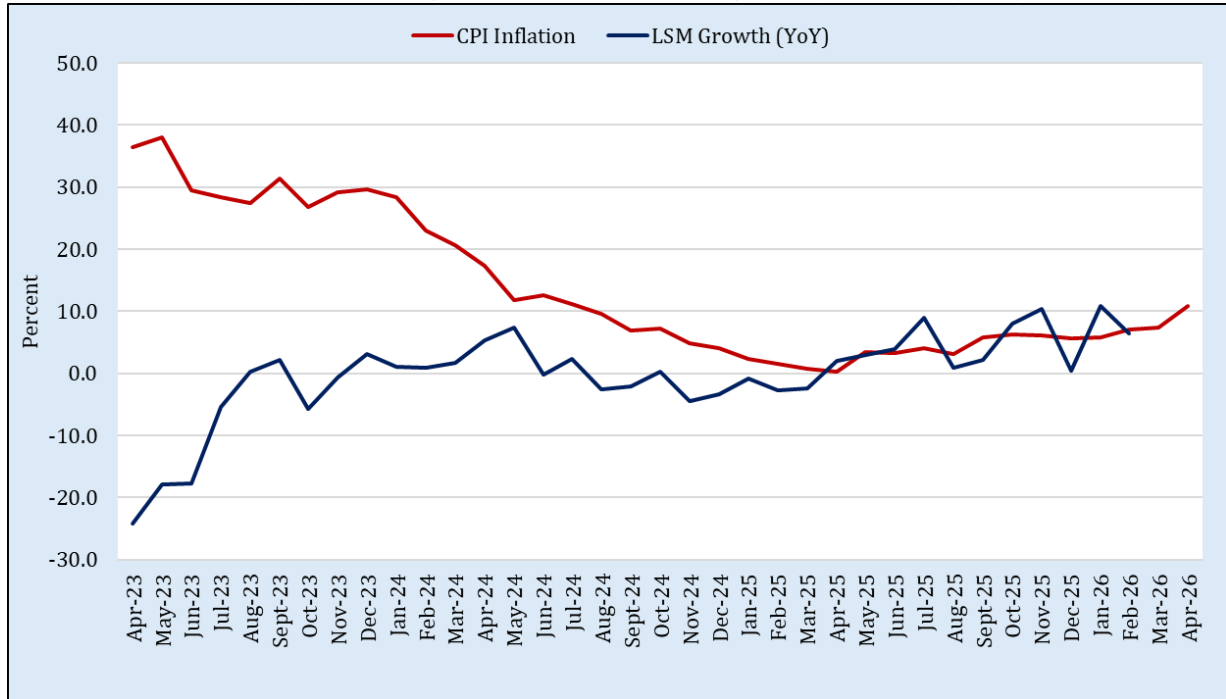
1.5 CPI Inflation (YoY) and Policy Rate



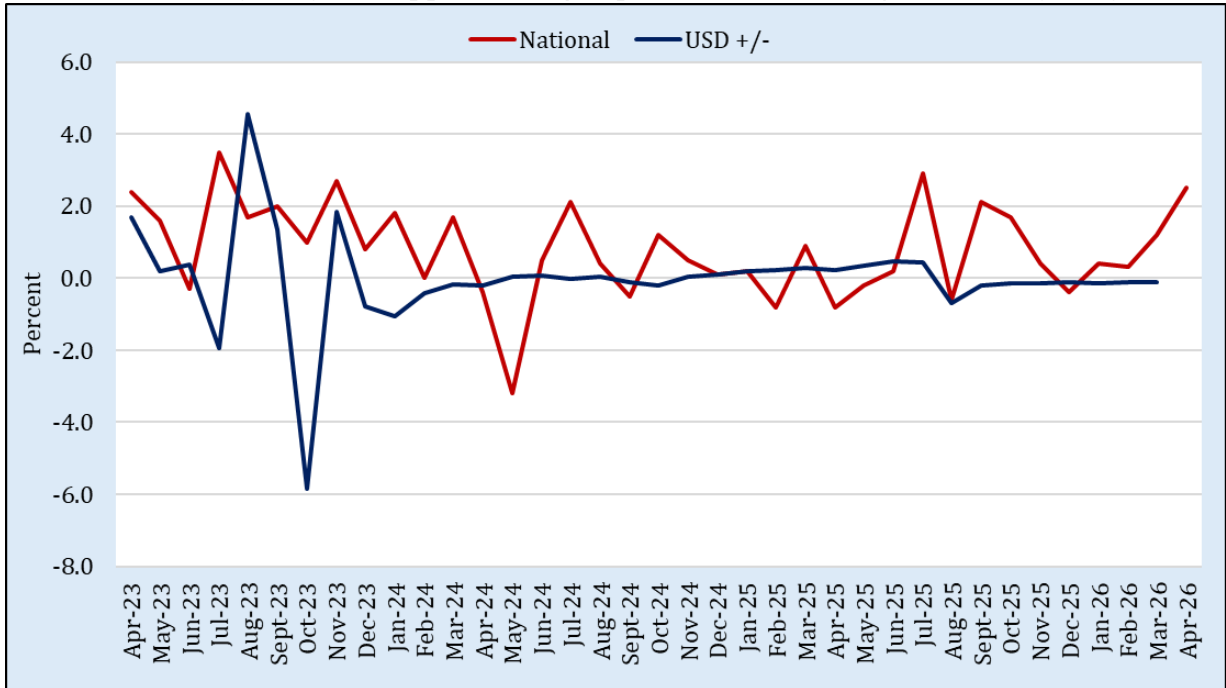
1.6 CPI Inflation (YoY) and Currency in Circulation (CIC) Growth (YoY)



1.7 CPI Inflation (YoY) and Large-Scale Manufacturing (LSM) Growth (YoY)



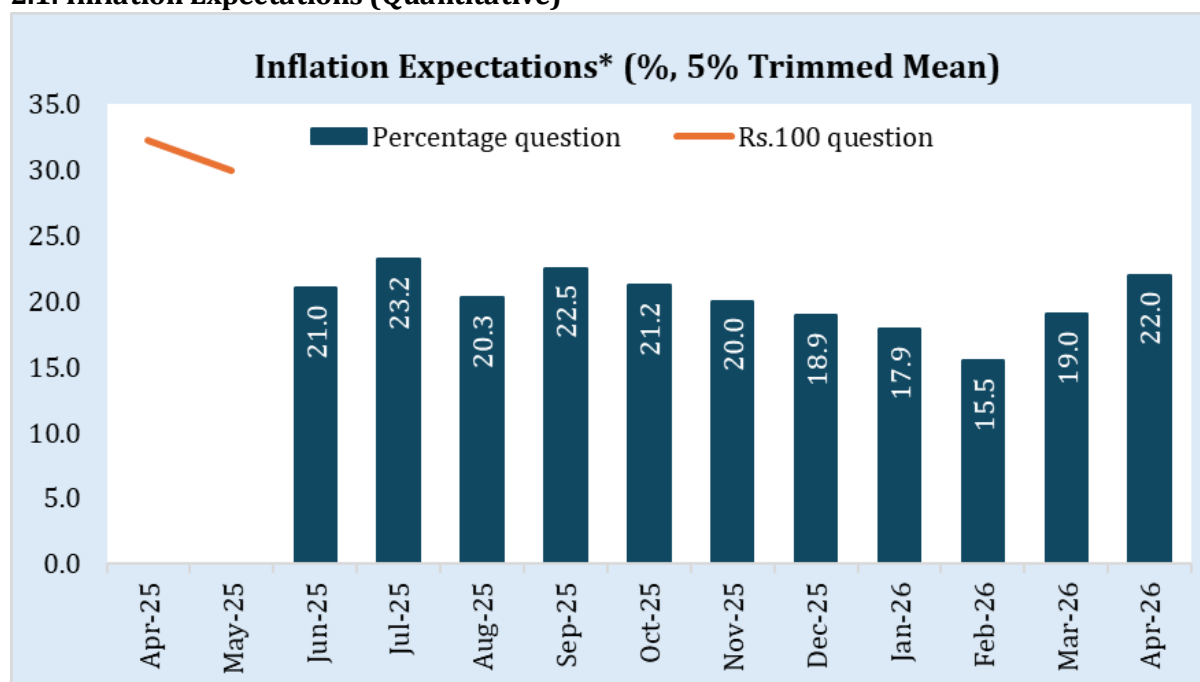
1.8 CPI Inflation (MoM) and Appreciation/Depreciation of USD against PKR (MoM)



2. Inflation Expectations

Consumer Confidence Survey (CCS) is a stratified random telephonic survey of households across Pakistan conducted on monthly basis¹.

2.1: Inflation Expectations (Quantitative)



* Starting July 2025, the inflation expectations question (quantitative) has been revised—from asking about absolute changes in the price of a Rs. 100 item to a percentage change in price level. In June, as part of the transition, half of the sample was asked the original Rs. 100-based question, while the other half responded to the new percentage-based question.

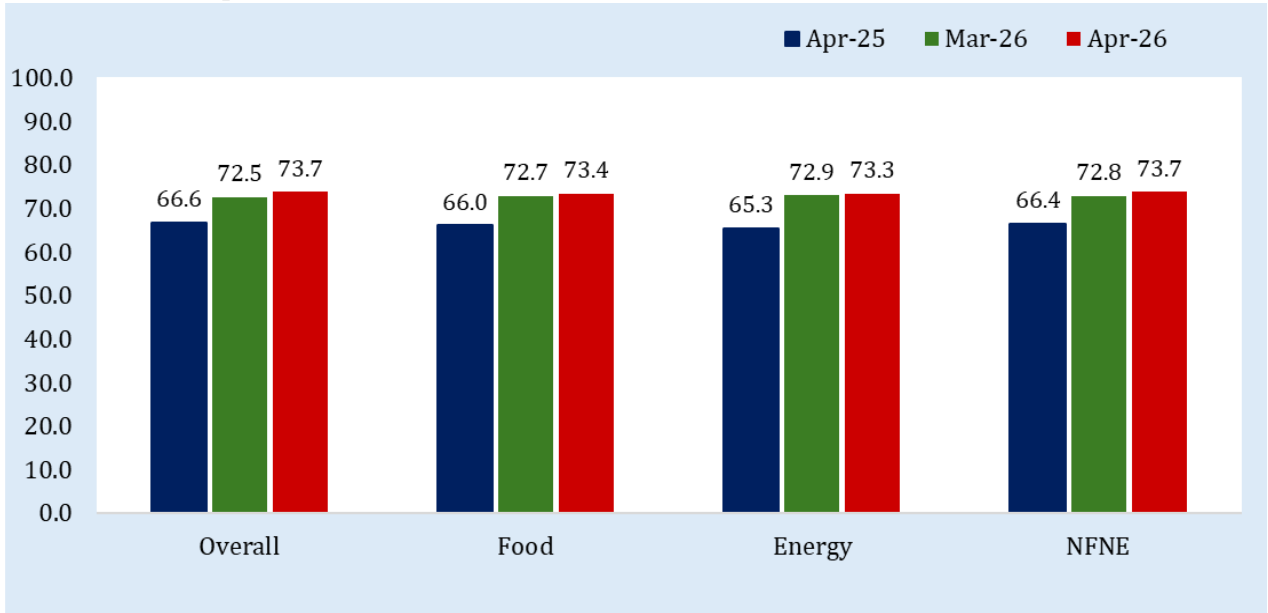
Table 2.1 Inflation Expectations Diffusion Index

| Diffusion Index** | Apr-25 | May-25 | Jun-25 | Jul-25 | Aug-25 | Sept-25 | Oct-25 | Nov-25 | Dec-25 | Jan-26 | Feb-26 | Mar-26 | Apr-26 |
|-------------------------|--------|--------|--------|--------|--------|---------|--------|--------|--------|--------|--------|--------|--------|
| Overall | 66.6 | 63.3 | 65.6 | 69.0 | 67.5 | 70.0 | 71.1 | 70.7 | 69.8 | 69.9 | 70.8 | 72.5 | 73.7 |
| Food Inflation | 66.0 | 62.3 | 64.8 | 67.8 | 67.8 | 70.0 | 71.3 | 70.9 | 70.0 | 71.3 | 72.8 | 72.7 | 73.4 |
| Energy Inflation | 65.3 | 62.9 | 65.8 | 70.2 | 68.4 | 69.8 | 71.2 | 70.3 | 70.0 | 70.9 | 72.7 | 72.9 | 73.3 |
| NFNE Inflation | 66.4 | 64.4 | 66.2 | 69.6 | 68.5 | 69.5 | 70.9 | 69.5 | 70.0 | 71.6 | 73.4 | 72.8 | 73.7 |

** Diffusion Index (DI) > 50 indicates that Positive/Increasing views are more than Negative/Declining views. DI = 50 indicates that Positive/ Increasing views and Negative/ Declining views are equal. DI < 50 indicates that Positive/ increasing views are less than the Negative/ declining views.

¹ The State Bank of Pakistan (SBP) conducts this survey. These are opinions of households and may not be considered as views of SBP.

2.2: Inflation Expectations Diffusion Index



3. CPI Inflation (YoY) – Group-wise Impact (in % points)

Table 3.1: Weighted Contributions (impact in % points) to CPI Inflation (YoY)

| Period | Urban | | | | Rural | | | |
|--------|---------------|------------------------|----------|------|---------------|------------------------|----------|------|
| | CPI Inflation | Weighted Contributions | | | CPI Inflation | Weighted Contributions | | |
| | | Food | Non-Food | | | Food | Non-Food | |
| | | | Energy | NFNE | | | Energy | NFNE |
| Apr-26 | 11.1 | 2.7 | 4.8 | 3.7 | 10.6 | 3.5 | 3.6 | 3.4 |
| Mar-26 | 7.4 | 1.1 | 2.9 | 3.3 | 7.2 | 2.2 | 1.7 | 3.3 |
| Feb-26 | 6.8 | 1.7 | 1.8 | 3.2 | 7.3 | 3.3 | 0.7 | 3.3 |
| Jan-26 | 5.8 | 1.3 | 1.3 | 3.2 | 5.8 | 2.3 | 0.3 | 3.2 |
| Dec-25 | 5.8 | 1.3 | 1.4 | 3.1 | 5.4 | 1.9 | 0.4 | 3.2 |
| Nov-25 | 6.1 | 2.0 | 1.1 | 2.9 | 6.3 | 2.9 | 0.2 | 3.2 |
| Oct-25 | 6.0 | 1.8 | 0.9 | 3.3 | 6.6 | 3.4 | 0.0 | 3.2 |
| Sep-25 | 5.7 | 1.7 | 0.9 | 3.1 | 5.9 | 2.9 | -0.1 | 3.0 |
| Aug-25 | 3.5 | -0.2 | 0.6 | 3.0 | 2.5 | -0.2 | -0.3 | 3.0 |
| Jul-25 | 4.4 | 0.9 | 0.5 | 3.0 | 3.5 | 0.7 | -0.3 | 3.1 |
| Jun-25 | 3.0 | 1.6 | -1.7 | 3.0 | 3.6 | 1.2 | -0.9 | 3.3 |
| May-25 | 3.5 | 2.1 | -1.8 | 3.2 | 3.4 | 1.0 | -1.0 | 3.4 |
| Apr-25 | 0.5 | -0.8 | -1.9 | 3.2 | -0.1 | -2.3 | -1.1 | 3.3 |

Note: The weighted contribution of sub-groups may not tally with the CPI Inflation due to rounding off.

Figure 3.1: Urban CPI Inflation (YoY) - Group-wise Impact (In % points)

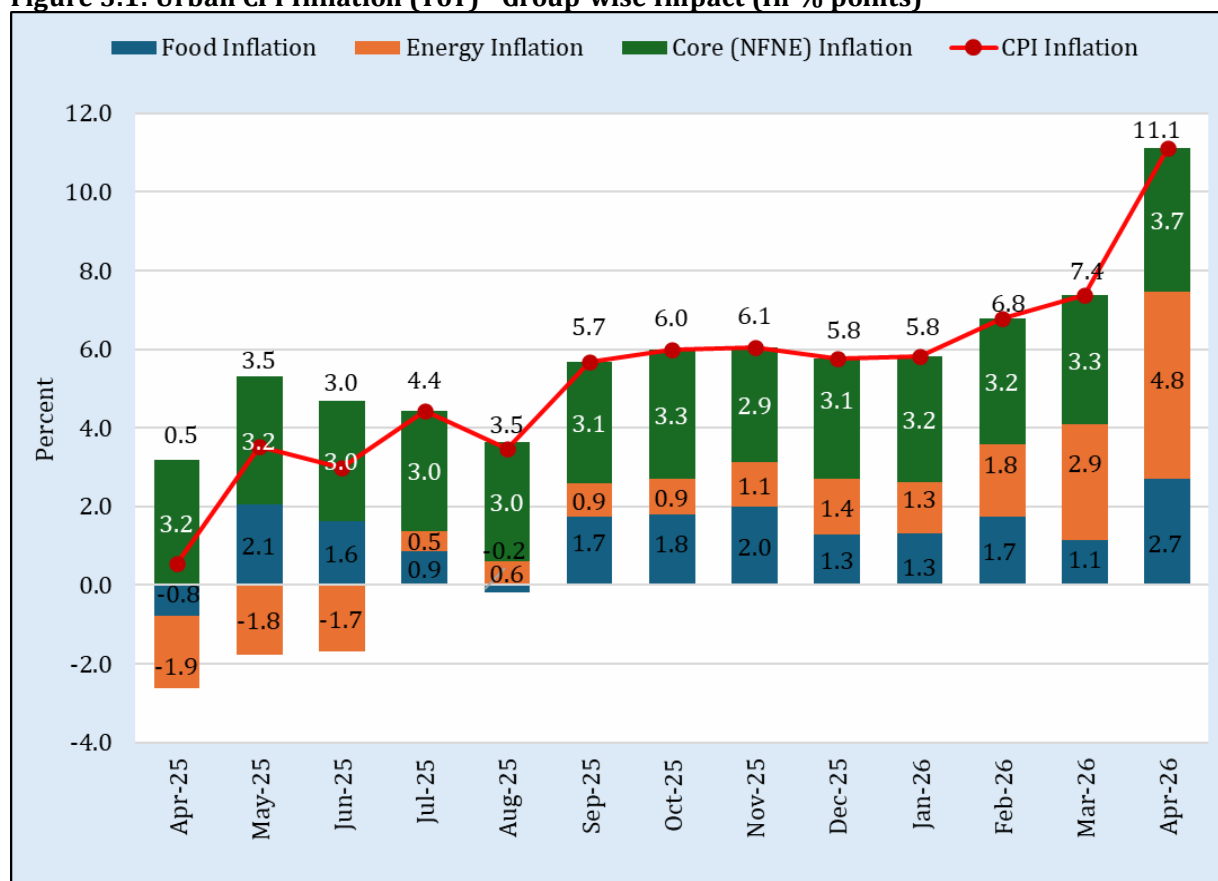
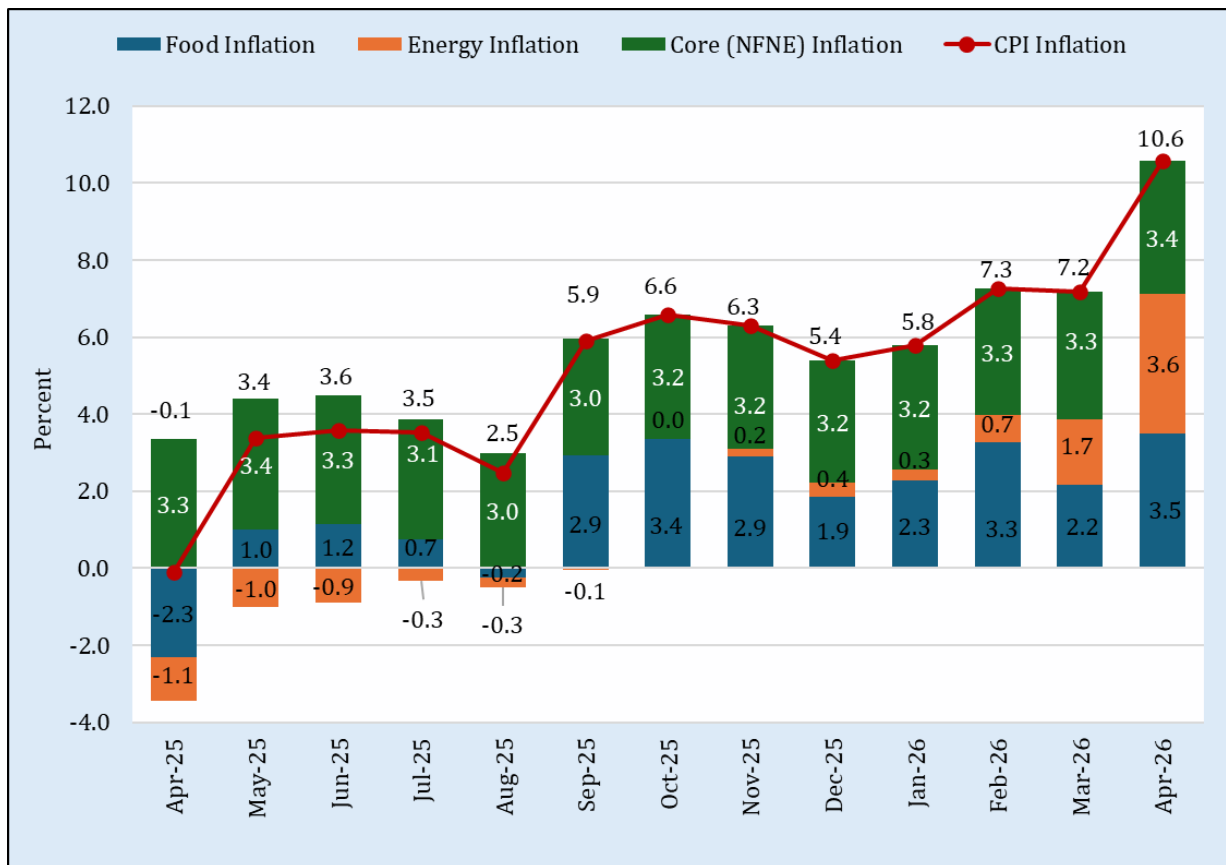


Figure 3.2: Rural CPI Inflation (YoY) - Group-wise Impact (In % points)



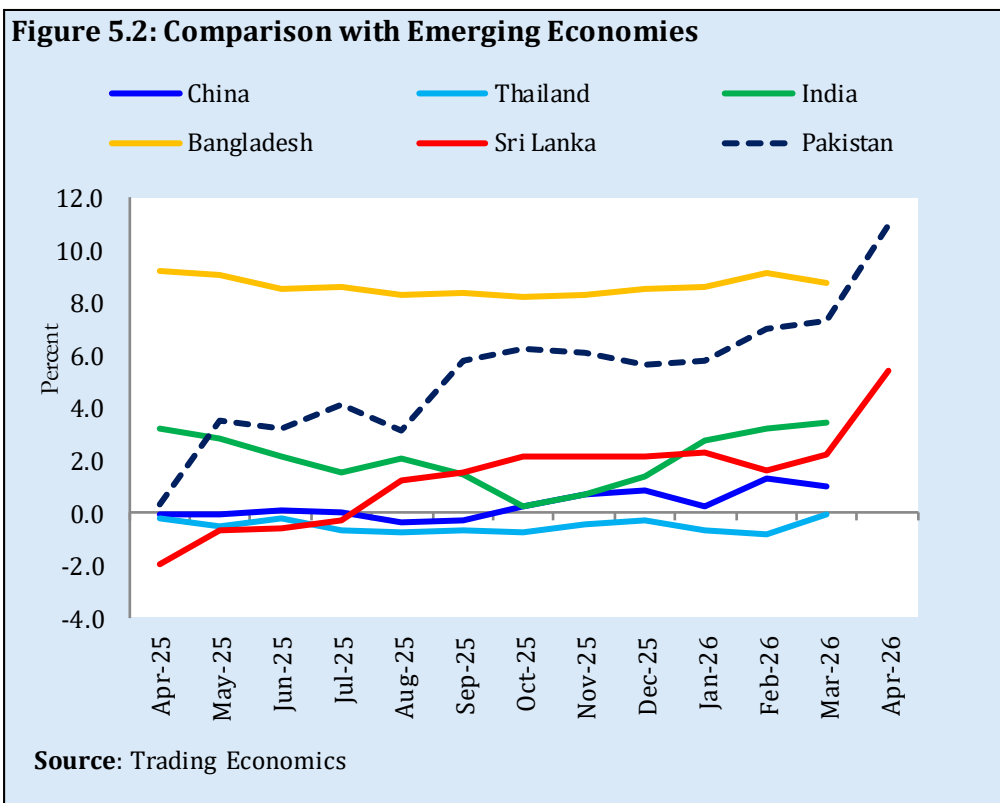
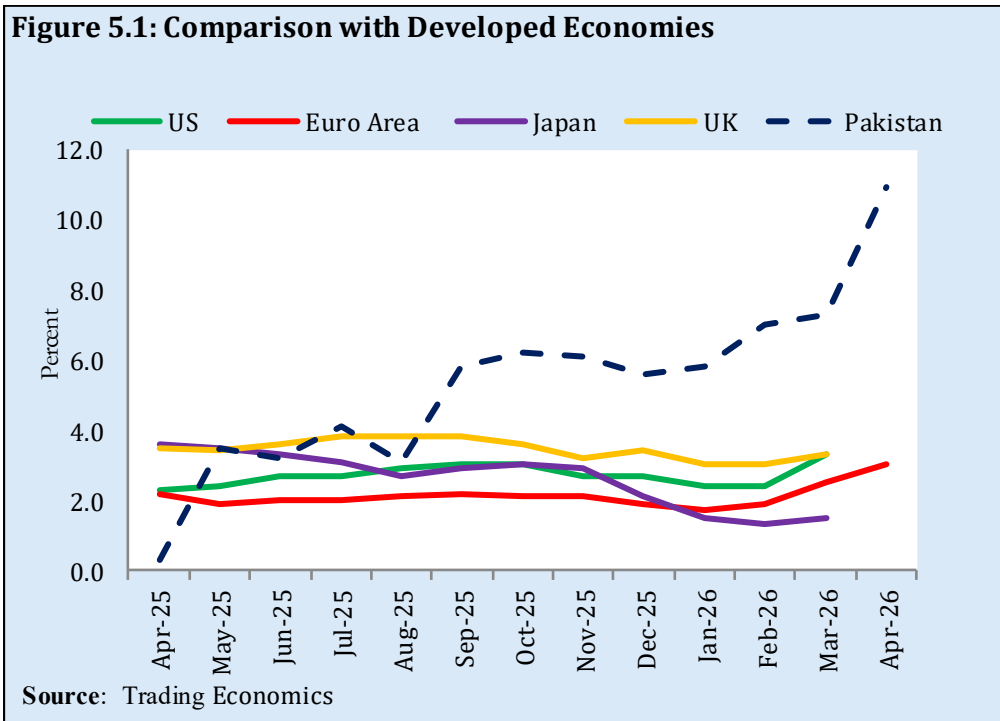
4. Growth of Average Monthly Prices of 51 Essential Items - April 2026

| S. No. | Description | Unit | MoM | YoY |
|--------|---|------------|-------|--------|
| 1 | Wheat Flour Bag | 20 Kg | -3.31 | 33.19 |
| 2 | Rice Basmati Broken (Average Quality) | 1 Kg | -0.04 | 7.33 |
| 3 | Rice IRRI-6/9 (Sindh/Punjab) | 1 Kg | -0.25 | -0.59 |
| 4 | Bread plain (Small Size) | Each | 2.93 | 5.36 |
| 5 | Beef with Bone (Average Quality) | 1 Kg | 2.43 | 13.23 |
| 6 | Mutton (Average Quality) | 1 Kg | 4.62 | 14.68 |
| 7 | Chicken Farm Broiler (Live) | 1 Kg | 5.69 | -5.53 |
| 8 | Milk fresh (Un-boiled) | 1 Ltr | 1.36 | 4.10 |
| 9 | Curd (Dahi) Loose | 1 Kg | 1.17 | 5.22 |
| 10 | Powdered Milk NIDO 390 gm Polybag | Each | 0.15 | 10.28 |
| 11 | Eggs Hen (Farm) | 1 Dozen | 9.14 | 1.08 |
| 12 | Mustard Oil (Average Quality) | 1 Kg | -0.06 | 2.35 |
| 13 | Cooking Oil DALDA or Other Similar Brand (SN), 5 Litre Tin | Each | 0.24 | 2.69 |
| 14 | Vegetable Ghee DALDA/HABIB 2.5 kg Tin | Each | 0.26 | 2.26 |
| 15 | Vegetable Ghee DALDA/HABIB or Other superior Quality 1 kg Pouch | Each | 0.59 | 2.95 |
| 16 | Bananas (Kela) Local | 1 Dozen | -7.20 | 7.65 |
| 17 | Pulse Masoor (Washed) | 1 Kg | -0.11 | -11.44 |
| 18 | Pulse Moong (Washed) | 1 Kg | 0.36 | -1.75 |
| 19 | Pulse Mash (Washed) | 1 Kg | 1.74 | 2.50 |
| 20 | Pulse Gram | 1 Kg | 0.23 | -19.25 |
| 21 | Potatoes | 1 Kg | 8.93 | -47.06 |
| 22 | Onions | 1 Kg | 9.25 | 35.75 |
| 23 | Tomatoes | 1 Kg | 9.99 | 26.24 |
| 24 | Sugar Refined | 1 Kg | -1.03 | -11.61 |
| 25 | Gur (Average Quality) | 1 Kg | -0.53 | 4.99 |
| 26 | Salt Powdered (NATIONAL/SHAN) 800 gm Packet | Each | 0.00 | -12.91 |
| 27 | Chilies Powder NATIONAL 200 gm Packet | Each | 0.00 | 15.20 |
| 28 | Garlic (Lehsun) | 1 Kg | -8.19 | 4.77 |
| 29 | Tea Lipton Yellow Label 190 gm Packet | Each | 0.00 | -1.14 |
| 30 | Cooked Beef at Average Hotel | Per Plate | 0.49 | 4.83 |
| 31 | Cooked Daal at Average Hotel | Per Plate | 0.91 | 3.71 |
| 32 | Tea Prepared Ordinary | Per Cup | 0.36 | 4.17 |
| 33 | Cigarettes Capstan 20'S Packet | Each | 0.43 | 3.61 |
| 34 | Long Cloth 57" Gul Ahmed/Al Karam | 1 mtr | 0.87 | 5.38 |
| 35 | Shirting (Average Quality) | 1 mtr | 0.76 | 9.11 |
| 36 | Lawn Printed Gul Ahmed/Al Karam | 1 mtr | 0.81 | 4.15 |
| 37 | Georgette (Average Quality) | 1 mtr | 1.36 | 4.60 |
| 38 | Gents Sandal Bata | Pair | 0.00 | 0.00 |
| 39 | Gents Sponge Chappal Bata | Pair | 0.00 | 0.00 |
| 40 | Ladies Sandal Bata | Pair | 0.00 | 0.00 |
| 41 | Electricity Charges upto 50 Units | Per Unit | 4.34 | 35.39 |
| 42 | Gas Charges upto 3.3719 MMBTU | MMBTU | 0.00 | 29.85 |
| 43 | Firewood Whole | 40 Kg | 0.23 | 12.77 |
| 44 | Energy Saver Philips 14 Watt | Each | 0.45 | 5.58 |
| 45 | Sufi Washing Soap 250 gm Cake | Each | 1.00 | 2.16 |
| 46 | Match Box | Each | 0.00 | 0.00 |
| 47 | Petrol Super | Per Litre | 19.56 | 43.95 |
| 48 | Hi-Speed Diesel | Per Litre | 27.34 | 58.24 |
| 49 | LPG 11.67 kg Cylinder | Each | 26.00 | 57.12 |
| 50 | Telephone Call Charges | Per Minute | 0.00 | 0.00 |
| 51 | Toilet Soap LIFEBOUY 115 gm | Each | 0.00 | 5.15 |

5. Inflation in Global Context

5.1 Global Comparison

National CPI Inflation (YoY) in comparison with selected developed and emerging economies is given in **Figures 5.1 & 5.2** respectively.

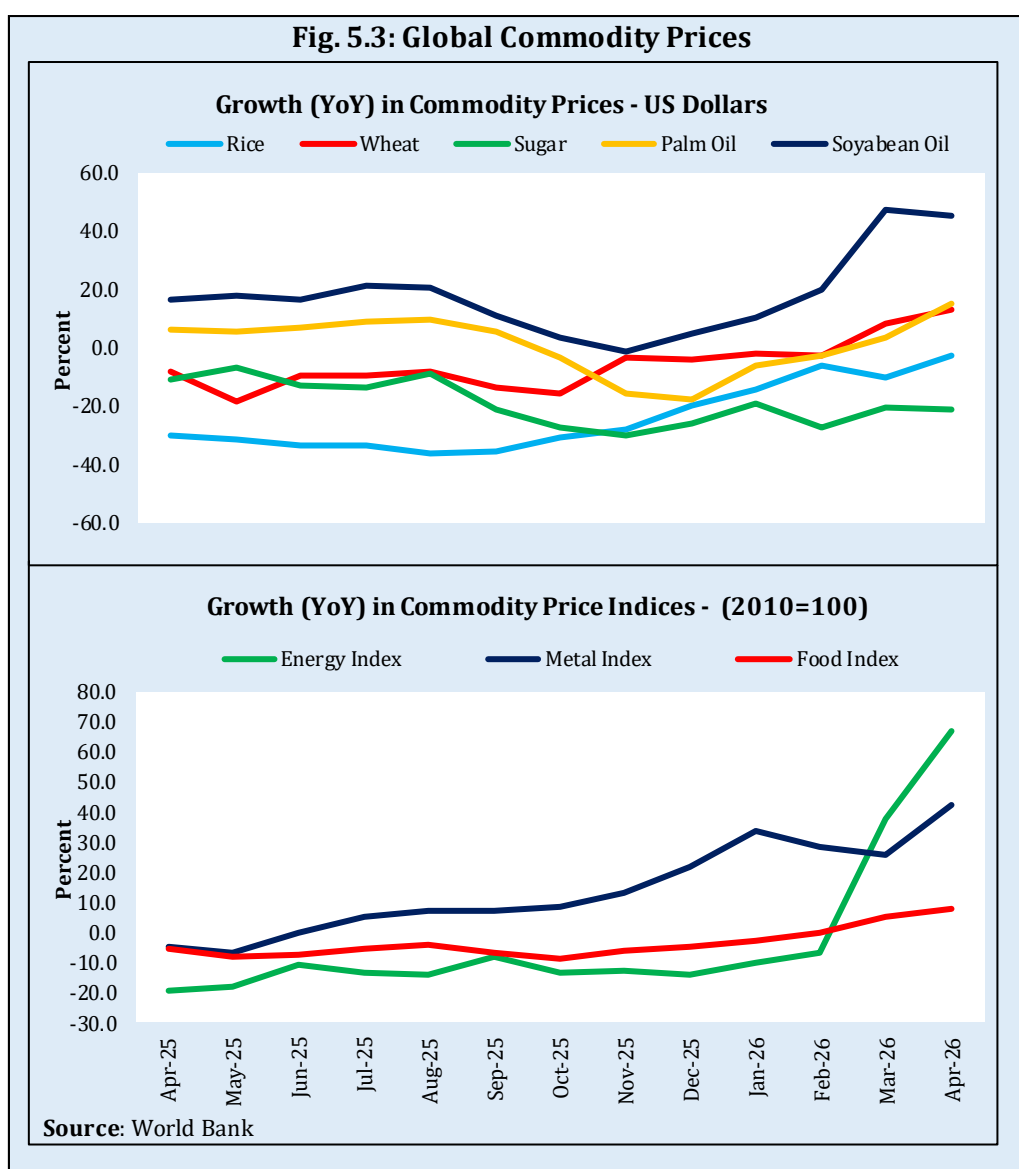


5.2 Global Commodity Prices/Inflation

Changes in major global commodity prices/indices along with trends in global prices/indices are given in Table 5.1 and Figure 5.3.

| Table 5.1: Changes in Major Global Prices/Indices (percent) | | | | | | |
|---|--------|------|--------|------|--------|------|
| Item/Group | Apr-26 | | Mar-26 | | Apr-25 | |
| | YoY | MoM | YoY | MoM | YoY | MoM |
| Food | 7.4 | 1.5 | 5.3 | 2.8 | -5.4 | -0.5 |
| Base Metals | 42.1 | 4.7 | 25.4 | 0.9 | -4.8 | -7.6 |
| Energy | 66.6 | 12.1 | 37.4 | 41.4 | -19.8 | -7.5 |
| Agricultural | -3.5 | 1.5 | -5.5 | 1.6 | -0.5 | -0.6 |
| Fertilizers | 61.5 | 14.0 | 42.5 | 26.2 | 13.6 | 0.7 |
| Cotton | 10.3 | 11.9 | -0.6 | 4.2 | -13.1 | 0.9 |

Data Source: Commodity Price Data, World Bank



5.3 Global Commodity Prices/Indices

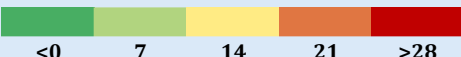
| Table 5.2: Global Commodity Prices/Indices | | | | |
|---|---------------|---------------|---------------|---------------|
| Items | Apr-26 | Mar-26 | Jun-25 | Apr-25 |
| Energy | | | | |
| Crude Oil (US\$ per barrel)* | 103.9 | 95.6 | 69.1 | 65.9 |
| WB Energy Index (2010 = 100) | 146.4 | 130.6 | 92.2 | 87.9 |
| Food | | | | |
| Rice (\$/MT) | 403.0 | 381.0 | 419.0 | 415.0 |
| Wheat (\$/MT) | 282.0 | 276.0 | 240.1 | 249.6 |
| Sugar (\$/ KG) | 0.3 | 0.3 | 0.4 | 0.4 |
| Palm Oil (\$/MT) | 1,148.0 | 1,108.6 | 935.4 | 994.4 |
| Soybean Oil (\$/MT) | 1,624.0 | 1,493.1 | 1,178.0 | 1,119.5 |
| Non-Food Non-Energy | | | | |
| Cotton Outlook 'A' Index (\$/KG) # | 1.9 | 1.7 | 1.7 | 1.7 |
| Metal Price Index (2010 = 100) | 160.0 | 152.9 | 119.2 | 112.6 |
| Copper (\$/MT) | 12,951.0 | 12,528.7 | 9,835.1 | 9,176.8 |
| Aluminum (\$/MT) | 3,599.9 | 3,373.0 | 2,526.0 | 2,371.6 |
| Iron Ore (\$/dry MT) | 106.1 | 104.5 | 92.3 | 97.2 |
| Tin (\$/MT) | 48,805.9 | 47,323.7 | 32,544.0 | 32,565.1 |
| Nickle (\$/MT) | 17,961.6 | 17,076.3 | 15,003.1 | 15,113.3 |
| Zinc (\$/MT) | 3,363.8 | 3,182.3 | 2,654.7 | 2,621.6 |
| Lead (\$/MT) | 1,929.9 | 1,878.2 | 1,973.9 | 1,903.5 |
| Uranium (\$/lb)@ | 86.4 | 84.3 | 78.5 | 67.7 |
| DAP (\$/MT) | 725.3 | 658.3 | 715.4 | 635.0 |
| Urea (\$/MT) | 856.9 | 725.6 | 420.5 | 386.9 |
| Source: World Bank for all variables / indices except Uranium which is taken from Cameco. | | | | |
| @ Data has been taken from Cameco website as it is not available in World Bank dataset. | | | | |
| * Crude Oil (Petroleum), simple average of three spot prices; Dated Brent, West Texas Intermediate, and the Dubai Fateh | | | | |
| # Middling 1-3/32 inch staple, Liverpool Index "A", average of the cheapest Cts/lb five of fourteen styles, CIF Liverpool (Cotton Outlook, Liverpool). From January 1968 to May 1981 strict middling 1-1/16 inch staple. Prior to 1968, Mexican 1-1/16.2/ | | | | |
| DAP: Diammonium Phosphate | | | | |

6. Data Visuals


6.1 CPI Inflation Heat Maps

Heat Maps provide an intuitive and visual presentation of data using colors of varying intensity such as cool to warm. The Heat Maps for National, Urban and Rural CPI inflation (YoY) are presented here.


| National CPI Inflation (YoY) | | | | | | | | | | | | |
|------------------------------|------|------|------|------|------|------|------|------|------|------|------|------|
| | Jul | Aug | Sep | Oct | Nov | Dec | Jan | Feb | Mar | Apr | May | Jun |
| FY26 | 4.1 | 3.1 | 5.8 | 6.2 | 6.1 | 5.6 | 5.8 | 7.0 | 7.3 | 10.9 | | |
| FY25 | 11.1 | 9.6 | 6.9 | 7.2 | 4.9 | 4.1 | 2.4 | 1.5 | 0.7 | 0.3 | 3.5 | 3.2 |
| FY24 | 28.3 | 27.4 | 31.4 | 26.8 | 29.2 | 29.7 | 28.3 | 23.1 | 20.7 | 17.3 | 11.8 | 12.6 |
| FY23 | 24.9 | 27.3 | 23.2 | 26.6 | 23.8 | 24.5 | 27.6 | 31.5 | 35.4 | 36.4 | 38.0 | 29.4 |
| FY22 | 8.4 | 8.4 | 9.0 | 9.2 | 11.5 | 12.3 | 13.0 | 12.2 | 12.7 | 13.4 | 13.8 | 21.3 |
| FY21 | 9.3 | 8.2 | 9.0 | 8.9 | 8.3 | 8.0 | 5.7 | 8.7 | 9.1 | 11.1 | 10.9 | 9.7 |
| FY20 | 8.4 | 10.5 | 11.4 | 11.0 | 12.7 | 12.6 | 14.6 | 12.4 | 10.2 | 8.5 | 8.2 | 8.6 |
| FY19 | 6.7 | 6.2 | 5.4 | 6.5 | 5.7 | 5.4 | 5.6 | 6.8 | 8.6 | 8.3 | 8.4 | 8.0 |

Key 

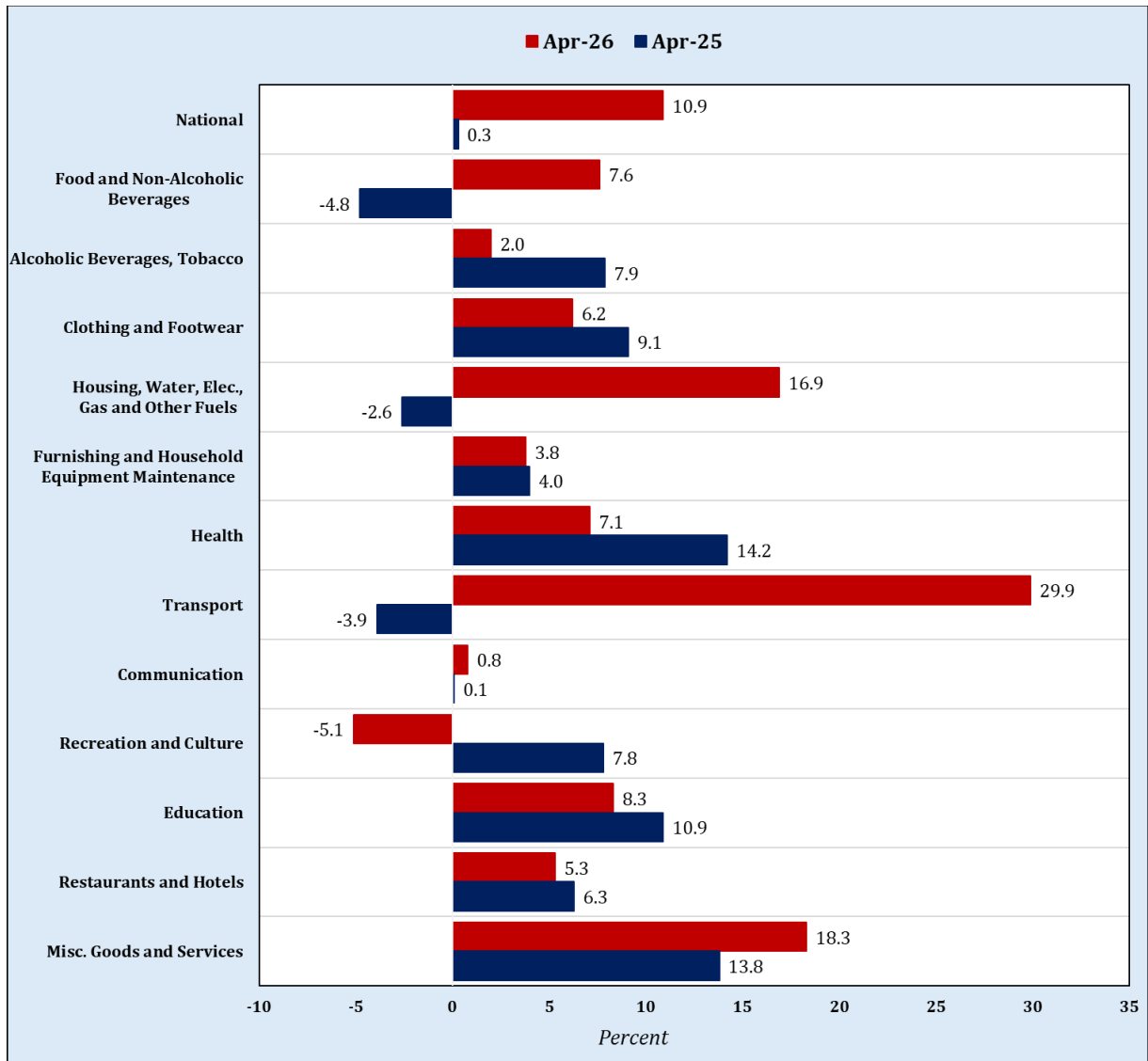
| Urban CPI Inflation (YoY) | | | | | | | | | | | | |
|---------------------------|------|------|------|------|------|------|------|------|------|------|------|------|
| | Jul | Aug | Sep | Oct | Nov | Dec | Jan | Feb | Mar | Apr | May | Jun |
| FY26 | 4.4 | 3.5 | 5.7 | 6.0 | 6.1 | 5.8 | 5.8 | 6.8 | 7.4 | 11.1 | | |
| FY25 | 13.2 | 11.7 | 9.3 | 9.3 | 5.2 | 4.4 | 2.7 | 1.8 | 1.2 | 0.5 | 3.5 | 3.0 |
| FY24 | 26.3 | 25.0 | 29.7 | 25.5 | 30.4 | 30.9 | 30.2 | 24.9 | 21.9 | 19.4 | 14.3 | 14.9 |
| FY23 | 23.6 | 26.2 | 21.2 | 24.6 | 21.6 | 21.6 | 24.4 | 28.8 | 33.0 | 33.5 | 35.1 | 27.3 |
| FY22 | 8.7 | 8.3 | 9.1 | 9.6 | 12.0 | 12.7 | 13.0 | 11.5 | 11.9 | 12.2 | 12.4 | 19.8 |
| FY21 | 7.8 | 7.1 | 7.7 | 7.3 | 7.0 | 7.0 | 5.0 | 8.6 | 8.7 | 11.0 | 10.8 | 9.6 |
| FY20 | 8.7 | 10.6 | 11.6 | 10.9 | 12.1 | 12.0 | 13.4 | 11.2 | 9.3 | 7.7 | 7.3 | 7.6 |
| FY19 | 6.7 | 6.2 | 5.6 | 7.0 | 6.3 | 5.9 | 6.2 | 7.2 | 8.9 | 8.4 | 8.5 | 8.1 |

Key 

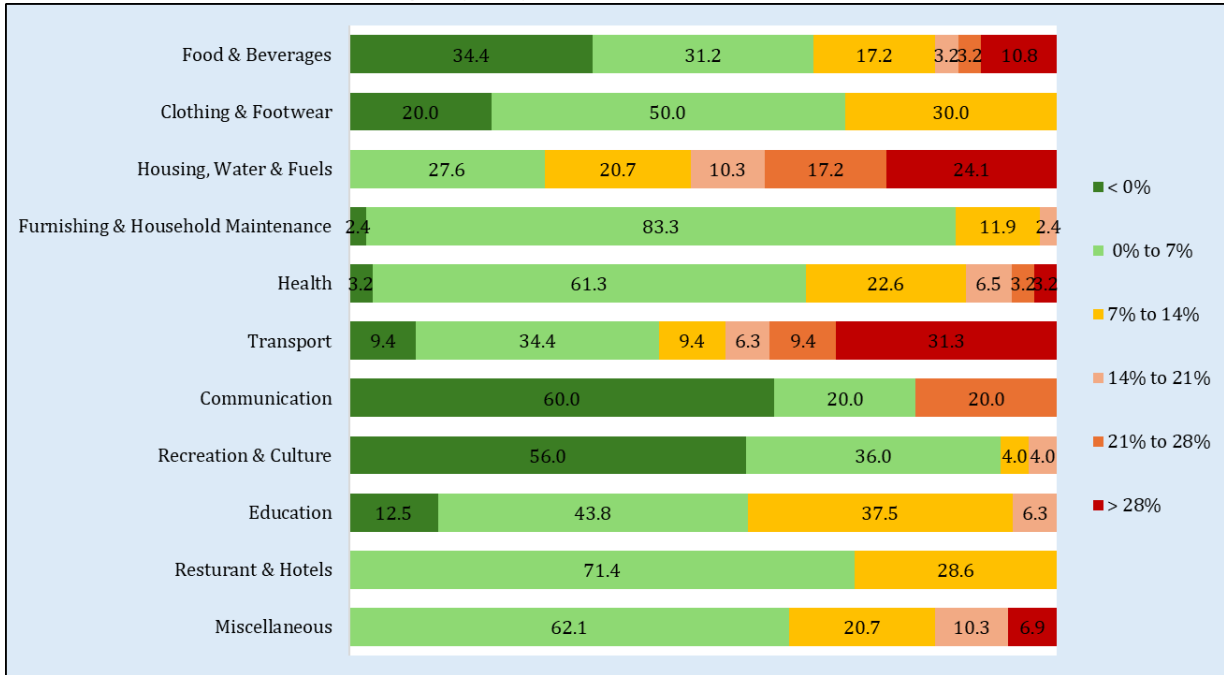
| Rural CPI Inflation (YoY) | | | | | | | | | | | | |
|---------------------------|------|------|------|------|------|------|------|------|------|------|------|------|
| | Jul | Aug | Sep | Oct | Nov | Dec | Jan | Feb | Mar | Apr | May | Jun |
| FY26 | 3.5 | 2.5 | 5.9 | 6.6 | 6.3 | 5.4 | 5.8 | 7.3 | 7.2 | 10.6 | | |
| FY25 | 8.1 | 6.7 | 3.6 | 4.2 | 4.3 | 3.6 | 1.9 | 1.1 | 0.0 | -0.1 | 3.4 | 3.6 |
| FY24 | 31.3 | 30.9 | 33.9 | 28.7 | 27.5 | 27.9 | 25.7 | 20.5 | 19.0 | 14.5 | 8.2 | 9.3 |
| FY23 | 26.9 | 28.8 | 26.1 | 29.5 | 27.2 | 28.8 | 32.3 | 35.6 | 38.9 | 40.7 | 42.2 | 32.4 |
| FY22 | 8.0 | 8.4 | 8.8 | 8.7 | 10.9 | 11.6 | 12.9 | 13.3 | 13.9 | 15.1 | 15.9 | 23.6 |
| FY21 | 11.6 | 9.9 | 11.1 | 11.3 | 10.5 | 9.5 | 6.6 | 8.8 | 9.5 | 11.3 | 10.9 | 9.7 |
| FY20 | 7.9 | 10.3 | 11.1 | 11.3 | 13.6 | 13.6 | 16.3 | 14.2 | 11.7 | 9.8 | 9.7 | 10.0 |
| FY19 | 6.6 | 6.2 | 5.1 | 5.7 | 4.7 | 4.6 | 4.6 | 6.0 | 8.2 | 8.1 | 8.3 | 7.9 |

Key 

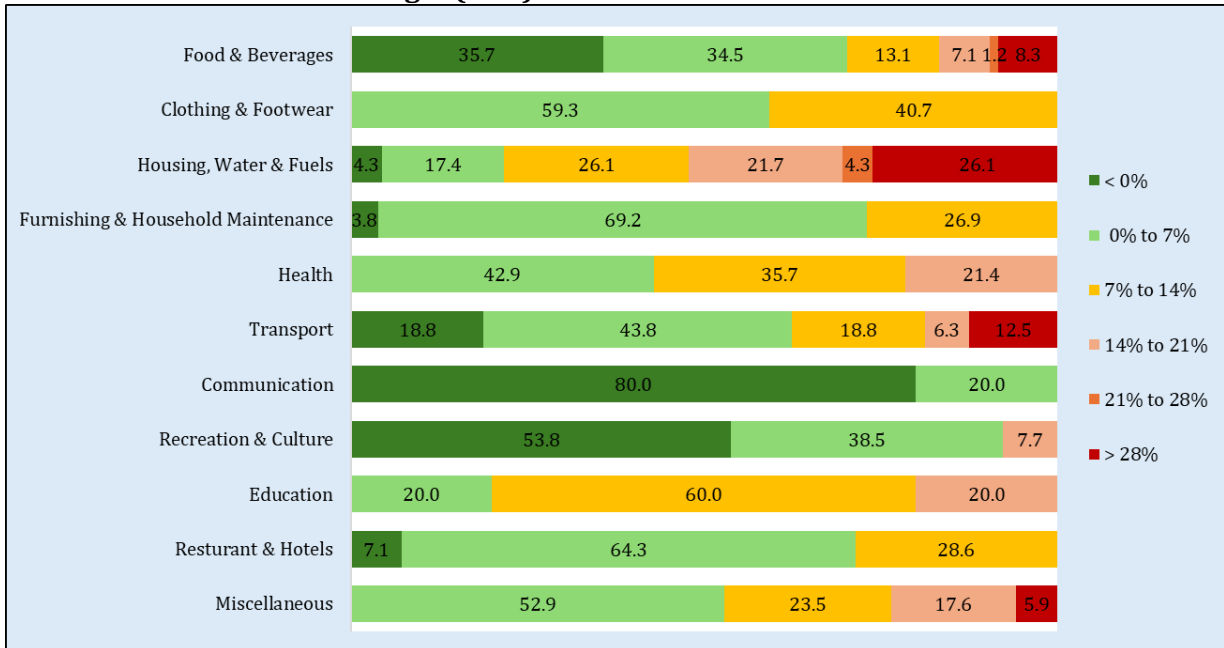
6.2 Group-wise CPI Inflation (YoY)



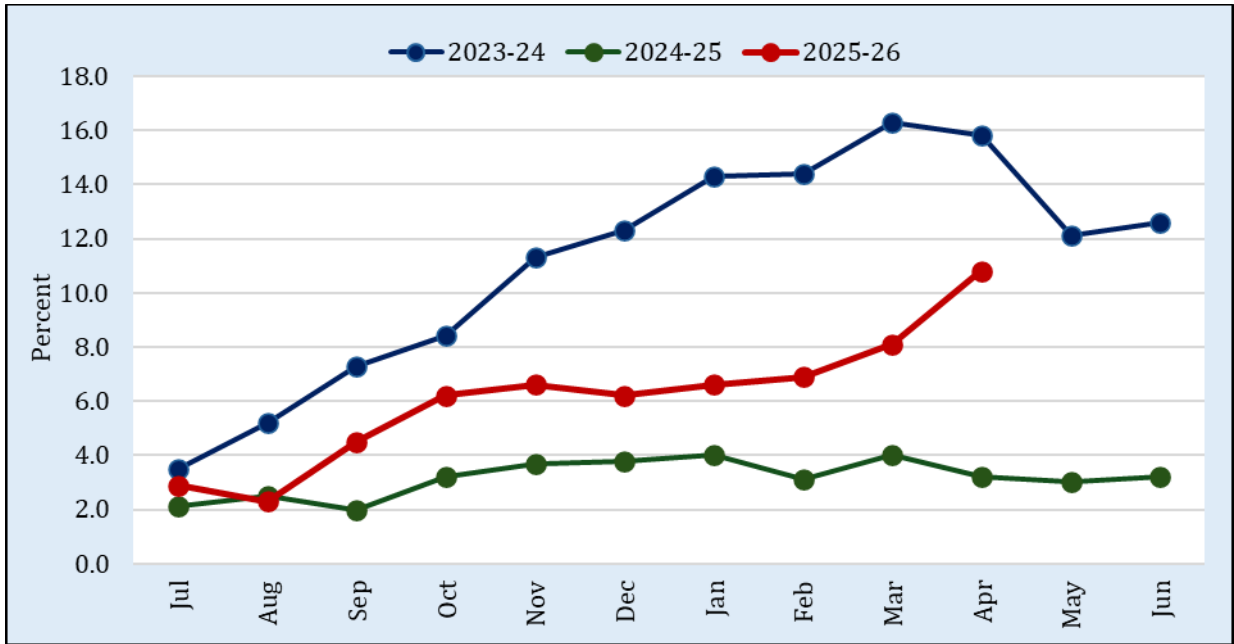
6.3 Distribution of Price Changes (YoY) in Urban Basket



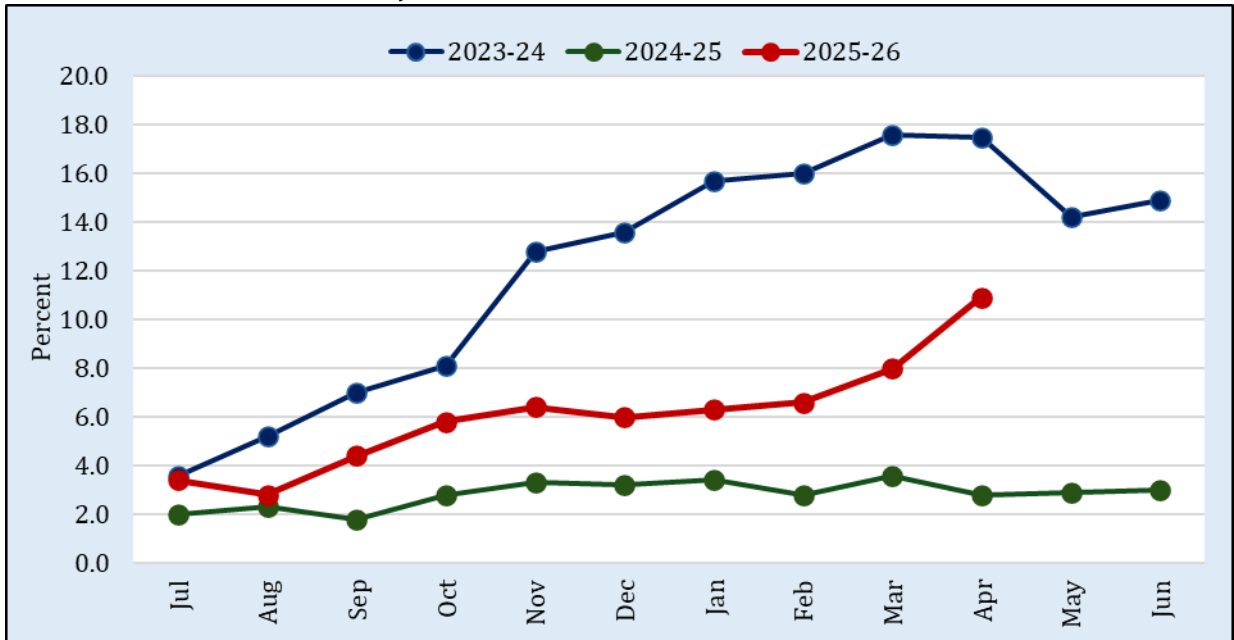
6.4 Distribution of Price Changes (YoY) in Rural Basket



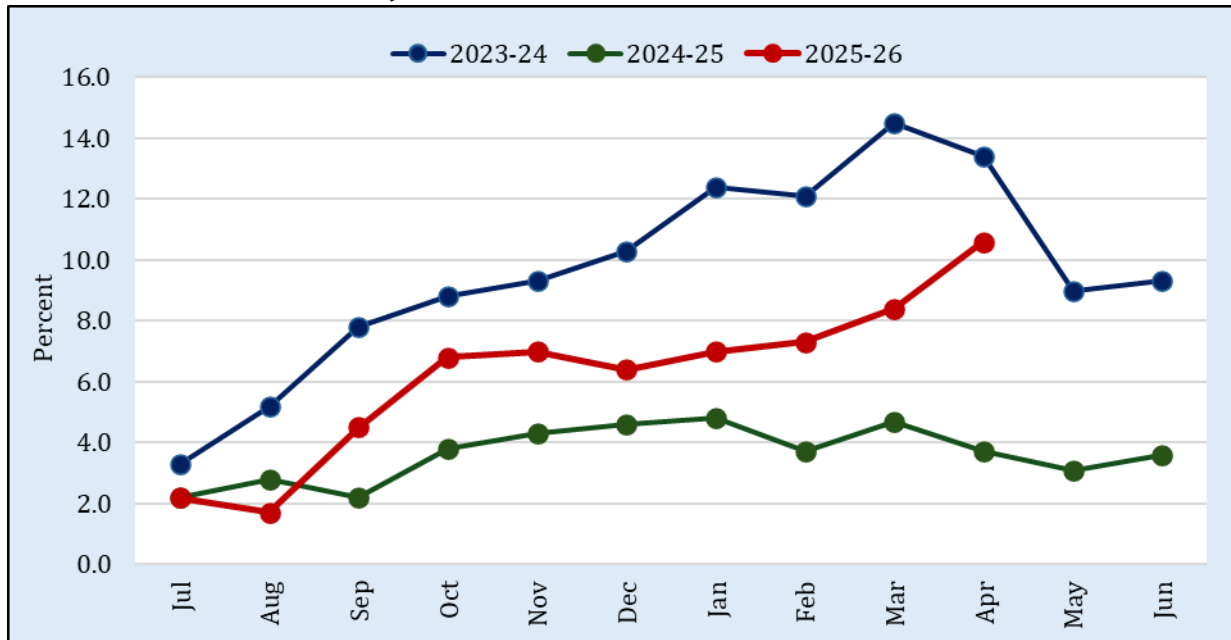
6.5 National CPI Inflation since June



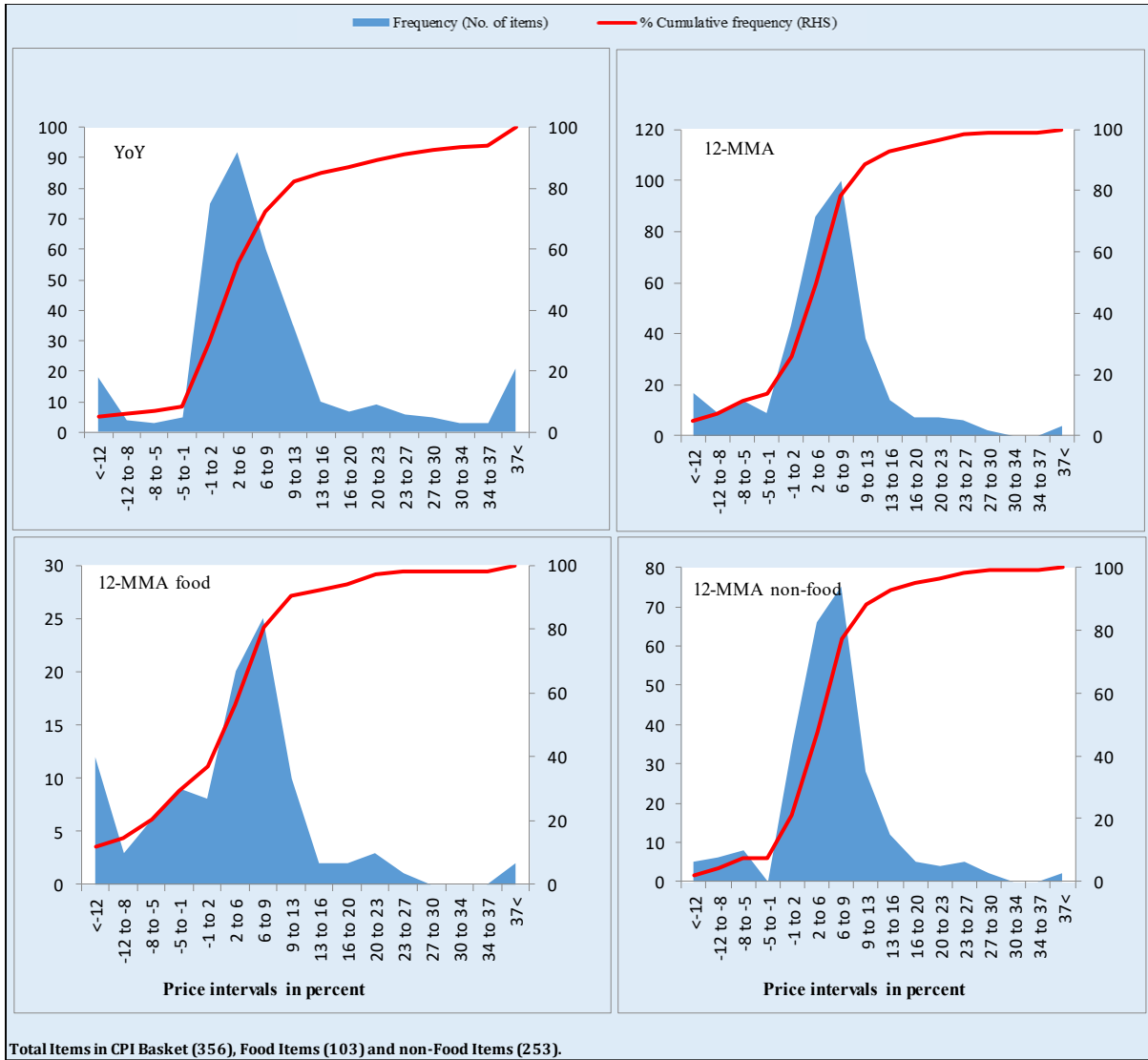
6.6 Urban CPI Inflation since June



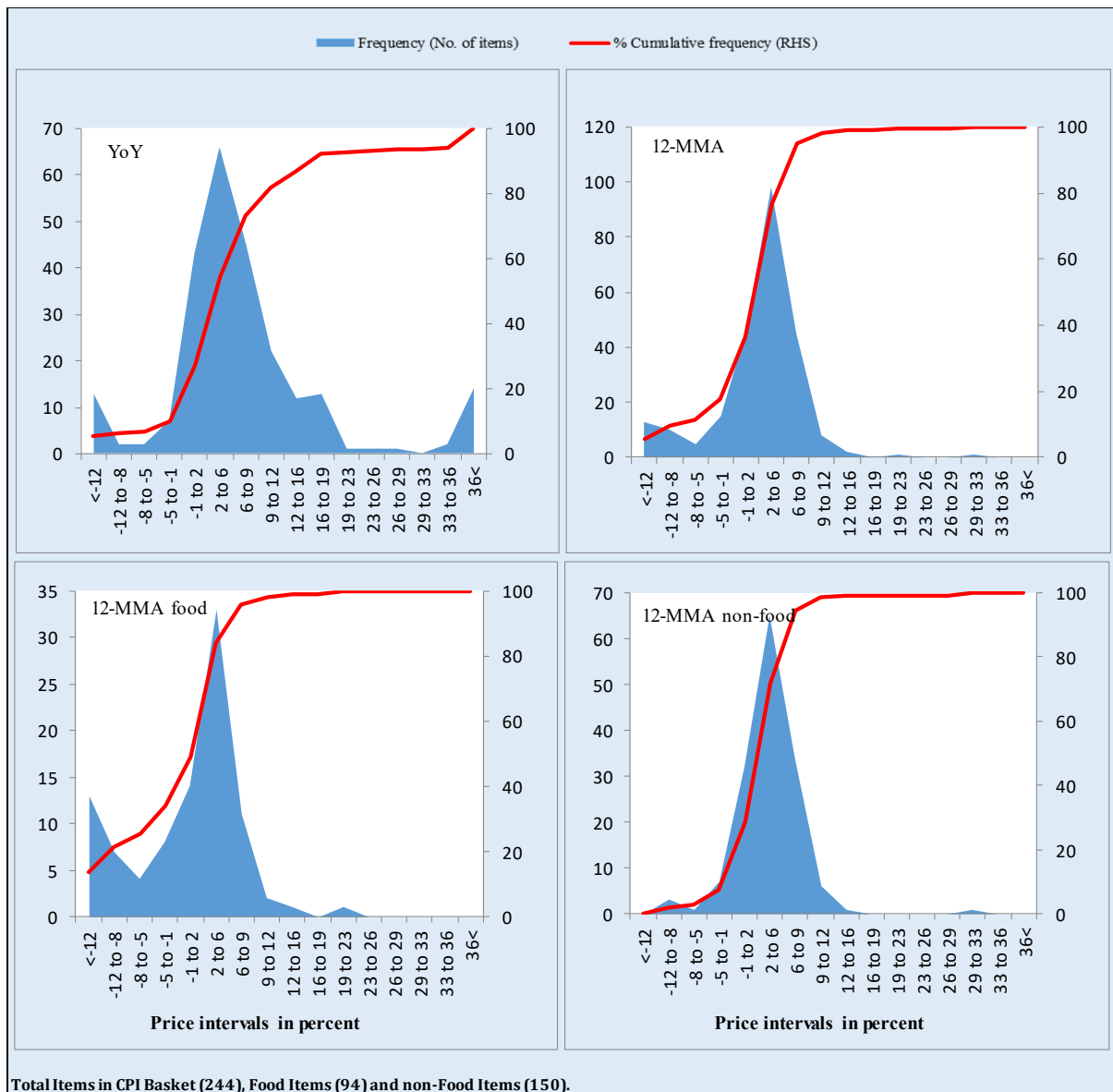
6.7 Rural CPI Inflation since June



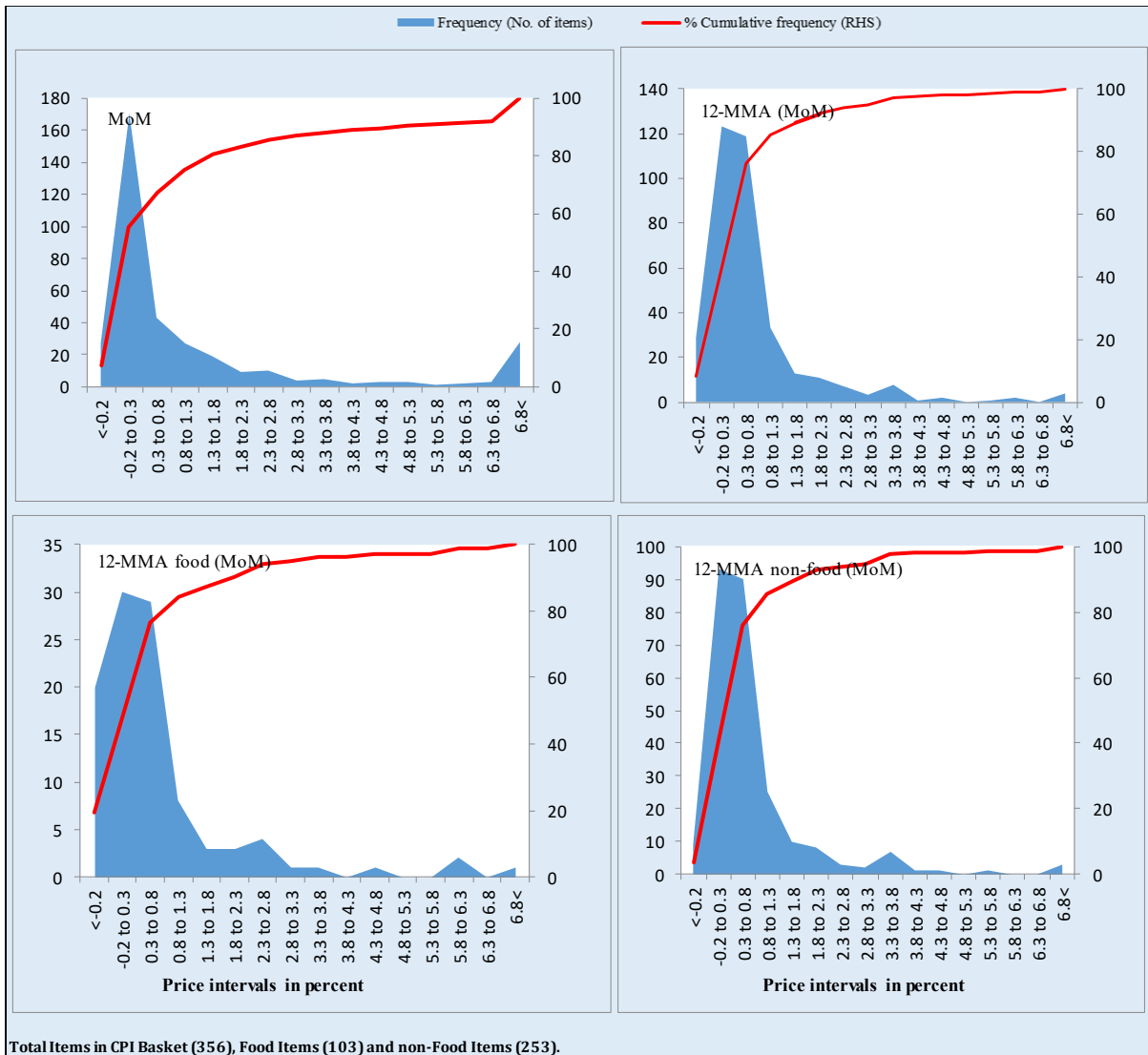
6.8 Frequency Distribution of Price Changes of Urban CPI Items (YoY)



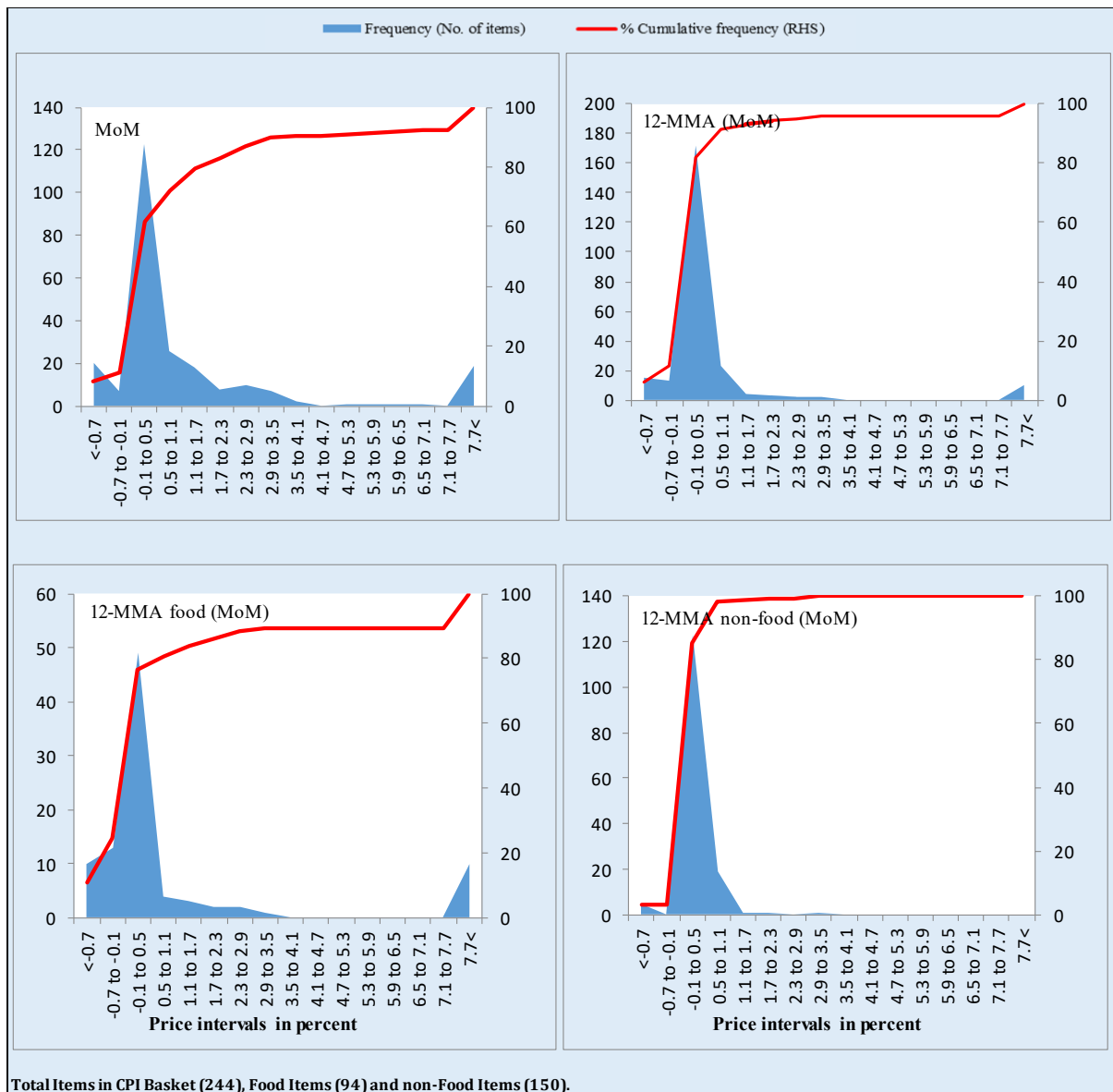
6.9 Frequency Distribution of Price Changes of Rural CPI Items (YoY)



6.10 Frequency Distribution of Price Changes of Urban CPI Items (MoM)



6.11 Frequency Distribution of Price Changes of Rural CPI Items (MoM)



6.12 Frequency Distribution of Price Changes of WPI Commodities (YoY)



7. Data Tables

Table 7.1: National CPI Inflation by Groups (in percent)

| Groups | Weights | MoM Change | | | YoY Change | | |
|---|--------------|------------|------------|-------------|-------------|------------|------------|
| | | Apr-26 | Mar-26 | Apr-25 | Apr-26 | Mar-26 | Apr-25 |
| Food and Non-Alcoholic Beverages | 34.6 | 1.8 | -0.3 | -2.1 | 7.6 | 3.6 | -4.8 |
| Alcoholic Beverages, Tobacco | 1.0 | 0.2 | 0.3 | 0.4 | 2.0 | 2.3 | 7.9 |
| Clothing and Footwear | 8.6 | 0.8 | 1.0 | 0.4 | 6.2 | 5.8 | 9.1 |
| Housing, Water, Elec., Gas and Other Fuels | 23.6 | 2.4 | 1.5 | -2.3 | 16.9 | 11.5 | -2.6 |
| Furnishing and Household Equip. Maintenance | 4.1 | 0.5 | 0.6 | 0.6 | 3.8 | 3.9 | 4.0 |
| Health | 2.8 | 0.3 | 0.2 | 0.6 | 7.1 | 7.4 | 14.2 |
| Transport | 5.9 | 15.5 | 11.8 | 0.0 | 29.9 | 12.5 | -3.9 |
| Communication | 2.2 | 0.1 | 0.2 | 0.1 | 0.8 | 0.8 | 0.1 |
| Recreation and Culture | 1.6 | -0.1 | 0.0 | 0.9 | -5.1 | -4.1 | 7.8 |
| Education | 3.8 | 3.0 | 1.1 | 3.7 | 8.3 | 9.0 | 10.9 |
| Restaurants and Hotels | 6.9 | 0.7 | 0.4 | 0.6 | 5.3 | 5.1 | 6.3 |
| Miscellaneous | 4.9 | -0.5 | 0.1 | 2.3 | 18.3 | 21.6 | 13.8 |
| National CPI | 100.0 | 2.5 | 1.2 | -0.8 | 10.9 | 7.3 | 0.3 |

Table 7.2: Urban CPI Inflation by Groups (in percent)

| Groups | Weights | MoM Change | | | YoY Change | | |
|--|--------------|------------|------------|-------------|-------------|-------------|-------------|
| | | Apr-26 | Mar-26 | Apr-25 | Apr-26 | Mar-26 | Apr-25 |
| I. Food Group | 36.8 | 2.3 | 0.1 | -1.6 | 6.9 | 2.9 | -1.9 |
| Food and Non-Alcoholic Beverages | 30.4 | 2.6 | 0.0 | -2.0 | 7.5 | 2.6 | -3.6 |
| Alcoholic Beverages, Tobacco | 0.9 | 0.1 | 0.3 | 0.8 | 2.1 | 2.8 | 8.2 |
| Restaurants and Hotels (Food Component) | 5.5 | 1.1 | 0.5 | 0.4 | 4.9 | 4.2 | 5.3 |
| II. Non-Food Group | 63.2 | 3.0 | 2.1 | -0.1 | 13.8 | 10.3 | 2.2 |
| Clothing and Footwear | 8.0 | 0.8 | 0.7 | 0.5 | 5.5 | 5.2 | 8.8 |
| Housing, Water, Elec., Gas and Other Fuels | 27.0 | 1.6 | 1.3 | -2.0 | 16.2 | 12.1 | -2.8 |
| Furnishing and Household Equip. Maintenance | 4.1 | 0.6 | 0.6 | 0.9 | 3.5 | 3.7 | 3.9 |
| Health | 2.3 | 0.5 | 0.3 | 0.8 | 6.2 | 6.5 | 15.4 |
| Transport | 6.1 | 17.0 | 12.1 | -0.1 | 32.2 | 12.8 | -3.5 |
| Communication | 2.4 | 0.2 | 0.1 | 0.0 | 0.8 | 0.6 | -0.3 |
| Recreation and Culture | 1.7 | 0.0 | 0.2 | 0.9 | -4.5 | -3.6 | 5.7 |
| Education | 4.9 | 3.0 | 1.3 | 4.1 | 7.7 | 8.9 | 9.8 |
| Restaurants and Hotels (Non-Food Component)* | 1.9 | 0.4 | 0.7 | 1.1 | 5.8 | 6.6 | 4.6 |
| Miscellaneous | 4.8 | -0.5 | -0.1 | 2.4 | 18.1 | 21.5 | 12.9 |
| Urban CPI | 100.0 | 2.7 | 1.3 | -0.7 | 11.1 | 7.4 | 0.5 |

* Readymade food component of this group has been classified under Food Group.

Table 7.3: Rural CPI Inflation by Groups (in percent)

| Groups | Weights | MoM Change | | | YoY Change | | |
|--|--------------|------------|-------------|-------------|-------------|------------|-------------|
| | | Apr-26 | Mar-26 | Apr-25 | Apr-26 | Mar-26 | Apr-25 |
| I. Food Group | 45.9 | 0.9 | -0.6 | -1.8 | 7.3 | 4.5 | -4.6 |
| Food and Non-Alcoholic Beverages | 40.9 | 0.9 | -0.7 | -2.1 | 7.8 | 4.6 | -6.2 |
| Alcoholic Beverages, Tobacco | 1.3 | 0.2 | 0.2 | 0.1 | 1.9 | 1.8 | 7.7 |
| Restaurants and Hotels (Food Component) | 3.8 | 0.5 | 0.0 | 0.6 | 4.8 | 4.9 | 7.3 |
| II. Non-Food Group | 54.1 | 3.2 | 2.4 | -0.4 | 13.6 | 9.7 | 4.4 |
| Clothing and Footwear | 9.5 | 0.8 | 1.4 | 0.3 | 7.0 | 6.5 | 9.5 |
| Housing, Water, Elec., Gas and Other Fuels | 18.5 | 4.4 | 2.3 | -3.0 | 18.3 | 10.0 | -2.3 |
| Furnishing and Household Equip. Maintenance | 4.1 | 0.5 | 0.5 | 0.3 | 4.3 | 4.2 | 4.2 |
| Health | 3.5 | 0.1 | 0.1 | 0.4 | 8.0 | 8.3 | 12.9 |
| Transport | 5.6 | 13.0 | 11.2 | 0.2 | 26.3 | 12.0 | -4.5 |
| Communication | 2.0 | 0.0 | 0.3 | 0.2 | 1.0 | 1.1 | 0.8 |
| Recreation and Culture | 1.4 | -0.4 | -0.3 | 0.9 | -6.1 | -4.8 | 11.3 |
| Education | 2.1 | 2.8 | 0.7 | 2.4 | 10.0 | 9.6 | 14.4 |
| Restaurants and Hotels (Non-Food Component)* | 2.4 | 0.2 | 0.0 | 0.5 | 7.1 | 7.4 | 11.2 |
| Miscellaneous | 5.0 | -0.5 | 0.4 | 2.1 | 18.7 | 21.8 | 15.0 |
| Rural CPI | 100.0 | 2.1 | 1.0 | -1.1 | 10.6 | 7.2 | -0.1 |

* Readymade food component of this group has been classified under Food Group.

Table 7.4: Top Ten Contributors to Urban CPI Inflation (YoY) – April 2026

| Sr. No. | Items/Contributors | Weights | Weighted Contribution (%) | YoY Change | | |
|---|--|-------------|---------------------------|------------|--------|--------|
| | | | | Apr-26 | Apr-25 | Mar-26 |
| A. Ranked by Weighted Contribution | | | | | | |
| 1 | Motor Fuel | 2.9 | 14.1 | 40.2 | -10.6 | 18.2 |
| 2 | Gas Charges | 1.1 | 12.7 | 22.9 | 0.0 | 22.9 |
| 3 | Electricity Charges | 4.6 | 12.0 | 33.7 | -26.6 | 14.2 |
| 4 | House Rent | 19.3 | 6.9 | 6.1 | 4.9 | 6.1 |
| 5 | Personal Effects N.E.C. | 0.9 | 6.9 | 45.6 | 26.4 | 56.5 |
| 6 | Wheat Flour | 3.0 | 6.6 | 30.6 | -34.6 | 23.6 |
| 7 | Transport Services | 1.8 | 5.9 | 37.7 | 6.4 | 7.6 |
| 8 | Liquefied Hydrocarbons | 0.5 | 3.8 | 63.4 | 1.2 | 23.5 |
| 9 | Milk Fresh | 7.1 | 3.5 | 5.4 | 11.1 | 2.5 |
| 10 | Meat | 2.0 | 3.0 | 12.5 | 15.4 | 11.2 |
| Total | | 43.2 | 75.3 | | | |
| B. Ranked by Percentage Change | | | | | | |
| 1 | Tomatoes | 0.4 | 1.2 | 75.4 | -58.2 | -5.4 |
| 2 | Liquefied Hydrocarbons | 0.5 | 3.8 | 63.4 | 1.2 | 23.5 |
| 3 | Personal Effects N.E.C. | 0.9 | 6.9 | 45.6 | 26.4 | 56.5 |
| 4 | Onions | 0.6 | 1.1 | 41.7 | -74.7 | -4.0 |
| 5 | Motor Fuel | 2.9 | 14.1 | 40.2 | -10.6 | 18.2 |
| 6 | Wheat | 0.6 | 1.7 | 39.4 | -36.0 | 34.2 |
| 7 | Transport Services | 1.8 | 5.9 | 37.7 | 6.4 | 7.6 |
| 8 | Electricity Charges | 4.6 | 12.0 | 33.7 | -26.6 | 14.2 |
| 9 | Wheat Flour | 3.0 | 6.6 | 30.6 | -34.6 | 23.6 |
| 10 | Fresh Vegetables | 1.5 | 2.9 | 25.7 | -17.0 | -4.9 |
| Total | | 16.8 | 56.2 | | | |
| C. Ranked by Weights | | | | | | |
| 1 | House Rent | 19.3 | 6.9 | 6.1 | 4.9 | 6.1 |
| 2 | Milk Fresh | 7.1 | 3.5 | 5.4 | 11.1 | 2.5 |
| 3 | Readymade Food | 5.5 | 2.7 | 4.9 | 5.3 | 4.2 |
| 4 | Education | 4.9 | 2.8 | 7.7 | 9.8 | 8.9 |
| 5 | Electricity Charges | 4.6 | 12.0 | 33.7 | -26.6 | 14.2 |
| 6 | Wheat Flour | 3.0 | 6.6 | 30.6 | -34.6 | 23.6 |
| 7 | Appliances/Articles/Products for Personal Care | 3.0 | 1.9 | 6.7 | 8.3 | 7.6 |
| 8 | Motor Fuel | 2.9 | 14.1 | 40.2 | -10.6 | 18.2 |
| 9 | Cotton Cloth | 2.2 | 1.3 | 6.0 | 5.6 | 5.8 |
| 10 | Meat | 2.0 | 3.0 | 12.5 | 15.4 | 11.2 |
| Total | | 54.5 | 54.8 | | | |

Table 7.5: Top Ten Contributors to Rural CPI Inflation (YoY) – April 2026

| Sr. No. | Items/Contributors | Weights | Weighted Contribution (%) | YoY Change | | |
|---|-------------------------|-------------|---------------------------|------------|--------|--------|
| | | | | Apr-26 | Apr-25 | Mar-26 |
| A. Ranked by Weighted Contribution | | | | | | |
| 1 | Motor Fuels | 2.5 | 13.3 | 43.4 | -11.5 | 19.5 |
| 2 | Wheat | 3.5 | 10.8 | 42.3 | -34.2 | 38.8 |
| 3 | Wheat Flour | 3.4 | 9.5 | 36.0 | -30.9 | 34.8 |
| 4 | Electricity Charges | 3.4 | 9.2 | 33.7 | -26.6 | 14.2 |
| 5 | Personal Effects N.E.C. | 1.2 | 8.6 | 40.6 | 31.9 | 50.3 |
| 6 | Liquefied Hydrocarbons | 1.0 | 6.3 | 57.7 | -1.7 | 19.8 |
| 7 | Milk Fresh | 10.4 | 5.5 | 5.8 | 9.6 | 5.3 |
| 8 | Solid Fuel | 4.5 | 5.5 | 13.0 | 8.2 | 8.0 |
| 9 | House Rent | 8.6 | 4.3 | 7.9 | 5.5 | 7.4 |
| 10 | Fresh Vegetables | 2.1 | 3.6 | 22.2 | -22.8 | -1.5 |
| Total | | 40.6 | 76.7 | | | |
| B. Ranked by Percentage Change | | | | | | |
| 1 | Liquefied Hydrocarbons | 1.00 | 6.3 | 57.7 | -1.7 | 19.8 |
| 2 | Motor Fuels | 2.5 | 13.3 | 43.4 | -11.5 | 19.5 |
| 3 | Tomatoes | 0.5 | 1.1 | 43.0 | -58.5 | -4.0 |
| 4 | Onions | 0.9 | 1.6 | 42.6 | -74.0 | -5.1 |
| 5 | Wheat | 3.5 | 10.8 | 42.3 | -34.2 | 38.8 |
| 6 | Personal Effects N.E.C. | 1.2 | 8.6 | 40.6 | 31.9 | 50.3 |
| 7 | Wheat Flour | 3.4 | 9.5 | 36.0 | -30.9 | 34.8 |
| 8 | Electricity Charges | 3.4 | 9.2 | 33.7 | -26.6 | 14.2 |
| 9 | Fresh Vegetables | 2.1 | 3.6 | 22.2 | -22.8 | -1.5 |
| 10 | Dental Services | 0.0 | 0.0 | 19.1 | 19.6 | 17.6 |
| Total | | 18.6 | 64.1 | | | |
| C. Ranked by Weights | | | | | | |
| 1 | Milk Fresh | 10.4 | 5.5 | 5.8 | 9.6 | 5.3 |
| 2 | House Rent | 8.6 | 4.3 | 7.9 | 5.5 | 7.4 |
| 3 | Solid Fuel | 4.5 | 5.5 | 13.0 | 8.2 | 8.0 |
| 4 | Readymade Food | 3.8 | 2.1 | 4.8 | 7.3 | 4.9 |
| 5 | Wheat | 3.5 | 10.8 | 42.3 | -34.2 | 38.8 |
| 6 | Electricity Charges | 3.4 | 9.2 | 33.7 | -26.6 | 14.2 |
| 7 | Wheat Flour | 3.4 | 9.5 | 36.0 | -30.9 | 34.8 |
| 8 | Cotton Cloth | 2.8 | 1.7 | 5.6 | 10.0 | 5.4 |
| 9 | Motor Fuels | 2.5 | 13.3 | 43.4 | -11.5 | 19.5 |
| 10 | Vegetable Ghee | 2.4 | 1.2 | 3.8 | 16.3 | 3.5 |
| Total | | 45.3 | 63.1 | | | |

Table 7.6: Inflation (CPI, WPI, SPI, Core)

| Period | CPI | | | | | | | WPI | | | SPI** | Core Inflation | | | |
|------------------------------------|----------|-------|-------|-------|-------|----------|-------|---------|------|----------|-------|----------------|-------|---------|-------|
| | General | | | Food | | Non-food | | General | Food | Non-food | | NFNE* | | Trimmed | |
| | National | Urban | Rural | Urban | Rural | Urban | Rural | | | | | Urban | Rural | Urban | Rural |
| Annual Average | | | | | | | | | | | | | | | |
| FY23 | 29.2 | 26.9 | 32.6 | 37.6 | 41.1 | 20.1 | 24.8 | 32.8 | 35.5 | 31.4 | 36.8 | 16.2 | 20.6 | 24.1 | 30.7 |
| FY24 | 23.4 | 24.1 | 22.4 | 22.1 | 21.6 | 25.5 | 23.3 | 20.2 | 19.9 | 20.3 | 32.1 | 16.1 | 22.7 | 19.1 | 22.7 |
| FY25 | 4.5 | 5.3 | 3.3 | 1.6 | -0.9 | 7.9 | 7.7 | 1.9 | 4.4 | 0.6 | 6.0 | 8.5 | 11.1 | 5.9 | 6.2 |
| Year-on-Year | | | | | | | | | | | | | | | |
| Apr-25 | 0.3 | 0.5 | -0.1 | -1.9 | -4.6 | 2.2 | 4.4 | -2.2 | 1.9 | -4.3 | -3.2 | 7.4 | 9.0 | 3.8 | 3.3 |
| May-25 | 3.5 | 3.5 | 3.4 | 5.3 | 2.1 | 2.4 | 4.6 | 0.4 | 7.2 | -3.1 | 0.1 | 7.3 | 8.8 | 4.9 | 4.7 |
| Jun-25 | 3.2 | 3.0 | 3.6 | 4.2 | 2.4 | 2.2 | 4.7 | 0.6 | 6.5 | -2.5 | -1.2 | 6.9 | 8.6 | 4.7 | 5.2 |
| Jul-25 | 4.1 | 4.4 | 3.5 | 2.2 | 1.5 | 5.9 | 5.4 | -0.5 | 2.8 | -2.3 | -0.1 | 7.0 | 8.1 | 5.1 | 4.9 |
| Aug-25 | 3.1 | 3.5 | 2.5 | -0.5 | -0.5 | 6.1 | 5.3 | -1.0 | 1.3 | -2.3 | 2.4 | 6.9 | 7.8 | 4.2 | 3.5 |
| Sep-25 | 5.8 | 5.7 | 5.9 | 4.4 | 6.0 | 6.5 | 5.8 | 0.6 | 6.1 | -2.4 | 4.5 | 7.0 | 7.8 | 5.7 | 6.5 |
| Oct-25 | 6.2 | 6.0 | 6.6 | 4.5 | 6.8 | 7.0 | 6.4 | 1.1 | 5.8 | -1.5 | 4.5 | 7.5 | 8.4 | 6.0 | 6.8 |
| Nov-25 | 6.1 | 6.1 | 6.3 | 5.0 | 5.9 | 6.7 | 6.7 | 1.1 | 5.9 | -1.6 | 4.0 | 6.6 | 8.2 | 5.3 | 6.4 |
| Dec-25 | 5.6 | 5.8 | 5.4 | 3.2 | 3.8 | 7.5 | 6.9 | 0.6 | 4.7 | -1.7 | 3.6 | 6.9 | 8.1 | 5.5 | 6.0 |
| Jan-26 | 5.8 | 5.8 | 5.8 | 3.3 | 4.7 | 7.4 | 6.9 | 0.2 | 4.7 | -2.2 | 3.7 | 7.2 | 8.3 | 4.9 | 5.4 |
| Feb-26 | 7.0 | 6.8 | 7.3 | 4.4 | 6.8 | 8.3 | 7.7 | 1.0 | 5.3 | -1.3 | 4.6 | 7.1 | 8.3 | 5.1 | 5.6 |
| Mar-26 | 7.3 | 7.4 | 7.2 | 2.9 | 4.5 | 10.3 | 9.7 | 6.7 | 2.9 | 8.8 | 6.6 | 7.4 | 8.4 | 5.9 | 6.3 |
| Apr-26 | 10.9 | 11.1 | 10.6 | 6.9 | 7.3 | 13.8 | 13.6 | 13.6 | 7.0 | 17.2 | 12.6 | 8.0 | 8.5 | 9.2 | 8.9 |
| 12- Month Moving Average | | | | | | | | | | | | | | | |
| Apr-25 | 5.9 | 7.1 | 4.1 | 1.3 | -1.2 | 11.3 | 9.7 | 3.4 | 3.7 | 3.3 | 9.6 | 9.3 | 12.4 | 6.9 | 7.3 |
| May-25 | 5.2 | 6.2 | 3.8 | 1.5 | -1.0 | 9.6 | 8.7 | 2.7 | 4.1 | 1.9 | 7.9 | 8.9 | 11.8 | 6.4 | 6.8 |
| Jun-25 | 4.5 | 5.3 | 3.3 | 1.6 | -0.9 | 7.9 | 7.7 | 1.9 | 4.4 | 0.6 | 6.0 | 8.5 | 11.1 | 5.9 | 6.2 |
| Jul-25 | 4.0 | 4.6 | 3.0 | 1.6 | -0.9 | 6.8 | 6.9 | 1.0 | 4.2 | -0.6 | 4.3 | 8.1 | 10.4 | 5.6 | 5.7 |
| Aug-25 | 3.4 | 4.0 | 2.6 | 1.2 | -1.1 | 5.9 | 6.4 | 0.4 | 3.8 | -1.3 | 3.2 | 7.8 | 9.9 | 5.3 | 5.3 |
| Sep-25 | 3.4 | 3.7 | 2.8 | 1.4 | -0.5 | 5.3 | 6.1 | 0.3 | 4.1 | -1.6 | 2.5 | 7.6 | 9.5 | 5.3 | 5.1 |
| Oct-25 | 3.3 | 3.5 | 3.0 | 1.6 | 0.0 | 4.8 | 6.0 | 0.1 | 4.2 | -2.0 | 1.8 | 7.5 | 9.2 | 5.5 | 5.0 |
| Nov-25 | 3.4 | 3.6 | 3.2 | 1.8 | 0.5 | 4.7 | 5.8 | 0.0 | 4.2 | -2.2 | 1.3 | 7.4 | 9.0 | 5.4 | 4.7 |
| Dec-25 | 3.6 | 3.7 | 3.3 | 1.9 | 0.8 | 4.9 | 5.8 | -0.1 | 4.2 | -2.4 | 1.3 | 7.3 | 8.8 | 4.8 | 4.5 |
| Jan-26 | 3.8 | 3.9 | 3.7 | 2.2 | 1.5 | 5.1 | 5.8 | -0.1 | 4.4 | -2.5 | 1.5 | 7.2 | 8.6 | 4.7 | 4.7 |
| Feb-26 | 4.3 | 4.4 | 4.2 | 2.7 | 2.4 | 5.5 | 5.9 | 0.0 | 4.6 | -2.4 | 1.8 | 7.2 | 8.5 | 4.9 | 5.3 |
| Mar-26 | 4.8 | 4.9 | 4.8 | 3.1 | 3.3 | 6.1 | 6.2 | 0.7 | 4.6 | -1.4 | 2.5 | 7.1 | 8.3 | 5.1 | 5.8 |
| Apr-26 | 5.7 | 5.8 | 5.7 | 3.8 | 4.3 | 7.0 | 7.0 | 2.0 | 5.0 | 0.4 | 3.8 | 7.2 | 8.3 | 5.7 | 6.4 |
| Period Average (Since July) | | | | | | | | | | | | | | | |
| Apr-25 | 4.7 | 5.7 | 3.3 | 1.1 | -1.5 | 9.1 | 8.3 | 2.2 | 3.9 | 1.2 | 7.4 | 8.8 | 11.6 | 6.0 | 6.5 |
| May-25 | 4.6 | 5.5 | 3.3 | 1.4 | -1.2 | 8.4 | 7.9 | 2.0 | 4.2 | 0.8 | 6.7 | 8.6 | 11.3 | 6.1 | 6.1 |
| Jun-25 | 4.5 | 5.3 | 3.3 | 1.6 | -0.9 | 7.9 | 7.7 | 1.9 | 4.4 | 0.6 | 6.0 | 8.5 | 11.1 | 5.9 | 6.2 |
| Jul-25 | 4.1 | 4.4 | 3.5 | 2.2 | 1.5 | 5.9 | 5.4 | -0.5 | 2.8 | -2.3 | -0.1 | 7.0 | 8.1 | 5.1 | 4.9 |
| Aug-25 | 3.6 | 3.9 | 3.0 | 0.8 | 0.5 | 6.0 | 5.4 | -0.7 | 2.1 | -2.3 | 1.2 | 6.9 | 7.9 | 4.3 | 4.1 |
| Sep-25 | 4.3 | 4.5 | 4.0 | 2.0 | 2.3 | 6.2 | 5.5 | -0.3 | 3.4 | -2.3 | 2.3 | 6.9 | 7.9 | 4.5 | 4.8 |
| Oct-25 | 4.8 | 4.9 | 4.6 | 2.6 | 3.5 | 6.4 | 5.7 | 0.0 | 4.0 | -2.1 | 2.8 | 7.1 | 8.0 | 5.0 | 5.4 |
| Nov-25 | 5.1 | 5.1 | 5.0 | 3.1 | 4.0 | 6.4 | 5.9 | 0.2 | 4.4 | -2.0 | 3.1 | 7.0 | 8.1 | 5.2 | 5.8 |
| Dec-25 | 5.2 | 5.2 | 5.0 | 3.1 | 3.9 | 6.6 | 6.1 | 0.3 | 4.4 | -2.0 | 3.2 | 7.0 | 8.1 | 5.3 | 5.9 |
| Jan-26 | 5.2 | 5.3 | 5.2 | 3.2 | 4.0 | 6.7 | 6.2 | 0.3 | 4.5 | -2.0 | 3.3 | 7.0 | 8.1 | 5.2 | 6.1 |
| Feb-26 | 5.5 | 5.5 | 5.4 | 3.3 | 4.4 | 6.9 | 6.4 | 0.4 | 4.6 | -1.9 | 3.4 | 7.0 | 8.1 | 5.3 | 6.0 |
| Mar-26 | 5.7 | 5.7 | 5.6 | 3.3 | 4.4 | 7.3 | 6.8 | 1.1 | 4.4 | -0.7 | 3.8 | 7.1 | 8.1 | 5.3 | 6.0 |
| Apr-26 | 6.2 | 6.3 | 6.1 | 3.6 | 4.7 | 8.0 | 7.4 | 2.3 | 4.7 | 1.0 | 4.6 | 7.2 | 8.2 | 5.8 | 6.3 |
| Month-on-Month | | | | | | | | | | | | | | | |
| Apr-25 | -0.8 | -0.7 | -1.0 | -1.6 | -1.8 | -0.1 | -0.4 | -1.3 | -2.1 | -0.8 | -1.9 | 1.3 | 0.9 | 0.3 | -0.1 |
| May-25 | -0.2 | 0.1 | -0.5 | 0.6 | -1.0 | -0.3 | -0.1 | 0.0 | 0.8 | -0.4 | -0.8 | 0.4 | 0.4 | 0.1 | -0.2 |
| Jun-25 | 0.2 | 0.1 | 0.5 | -0.6 | 0.1 | 0.5 | 0.8 | 0.6 | 0.6 | 0.6 | -0.5 | 0.2 | 0.7 | 0.3 | 0.5 |
| Jul-25 | 2.9 | 3.4 | 2.2 | 2.4 | 2.7 | 4.1 | 1.6 | 1.2 | 1.6 | 1.0 | 3.2 | 0.8 | 0.7 | 1.0 | 0.7 |
| Aug-25 | -0.6 | -0.7 | -0.5 | -1.3 | -0.7 | -0.3 | -0.3 | -0.2 | -0.4 | -0.1 | 3.0 | 0.3 | 0.2 | 0.0 | 0.3 |
| Sep-25 | 2.1 | 1.6 | 2.8 | 4.0 | 5.5 | 0.1 | 0.4 | 0.5 | 3.4 | -1.1 | 1.1 | 0.3 | 0.6 | 0.3 | 0.7 |
| Oct-25 | 1.7 | 1.4 | 2.1 | 1.7 | 3.0 | 1.1 | 1.3 | 0.5 | 1.4 | 0.0 | 0.3 | 1.1 | 1.3 | 0.9 | 1.2 |
| Nov-25 | 0.4 | 0.5 | 0.2 | 0.3 | -0.7 | 0.7 | 1.0 | -0.2 | -1.0 | 0.3 | 0.5 | 0.3 | 0.5 | 0.3 | 0.4 |
| Dec-25 | -0.4 | -0.4 | -0.6 | -1.7 | -1.9 | 0.5 | 0.7 | -0.9 | -1.1 | -0.7 | 0.2 | 0.5 | 0.6 | 0.3 | 0.4 |
| Jan-26 | 0.4 | 0.2 | 0.6 | -0.2 | 0.4 | 0.5 | 0.8 | -0.2 | -0.4 | -0.1 | -0.6 | 1.0 | 1.1 | 0.5 | 0.7 |
| Feb-26 | 0.3 | 0.3 | 0.3 | -0.8 | -0.5 | 0.9 | 1.0 | 0.7 | 0.3 | 0.9 | -0.1 | 0.2 | 0.4 | 0.2 | 0.3 |
| Mar-26 | 1.2 | 1.3 | 1.0 | 0.1 | -0.6 | 2.1 | 2.4 | 5.9 | -0.1 | 9.4 | 2.2 | 0.7 | 0.8 | 0.6 | 0.5 |
| Apr-26 | 2.5 | 2.7 | 2.1 | 2.3 | 0.9 | 3.0 | 3.2 | 5.1 | 1.8 | 6.8 | 3.6 | 1.9 | 1.1 | 1.1 | 1.0 |

* Non-Food Non-Energy, ** SPI for all expenditure groups combined

Table 7.7: National CPI Inflation by Groups

| Period | General | Food and Non-Alcoholic Beverages | Non-Perishable Food Items | Perishable Food Items | Alcoholic Beverages, Tobacco | Clothing and Footwear | Housing, Water, Elec., Gas and Other Fuels | Furnishing and Household Equipment Maintenance | Health | Transport | Communication | Recreation and Culture | Education | Restaurants and Hotels | Misc. Goods and Services |
|--|---------|----------------------------------|---------------------------|-----------------------|------------------------------|-----------------------|--|--|--------|-----------|---------------|------------------------|-----------|------------------------|--------------------------|
| Year-on-Year | | | | | | | | | | | | | | | |
| Apr-25 | 0.3 | -4.8 | -0.7 | -26.7 | 7.9 | 9.1 | -2.6 | 4.0 | 14.2 | -3.9 | 0.1 | 7.8 | 10.9 | 6.3 | 13.8 |
| May-25 | 3.5 | 3.1 | 5.0 | -9.2 | 7.9 | 9.7 | -2.5 | 3.9 | 12.7 | -2.5 | 0.6 | 1.3 | 10.1 | 7.4 | 15.4 |
| Jun-25 | 3.2 | 2.6 | 4.8 | -10.6 | 5.1 | 9.0 | -3.3 | 3.7 | 12.2 | 0.6 | 0.5 | -1.0 | 10.1 | 8.4 | 15.3 |
| Jul-25 | 4.1 | 0.9 | 2.6 | -8.2 | 3.7 | 8.4 | 3.6 | 3.3 | 10.8 | 2.7 | 0.5 | -1.5 | 10.2 | 7.7 | 14.9 |
| Aug-25 | 3.1 | -1.8 | 2.0 | -21.6 | 3.6 | 8.1 | 3.9 | 3.5 | 10.6 | 2.5 | 0.5 | -2.3 | 10.9 | 7.2 | 14.4 |
| Sep-25 | 5.8 | 5.0 | 6.5 | -3.7 | 3.4 | 8.0 | 4.4 | 4.1 | 10.6 | 4.2 | 0.4 | -2.7 | 10.7 | 6.1 | 14.9 |
| Oct-25 | 6.2 | 5.6 | 6.3 | 1.7 | 3.3 | 8.1 | 4.2 | 4.0 | 9.7 | 6.7 | 0.6 | -3.7 | 10.6 | 6.1 | 18.2 |
| Nov-25 | 6.1 | 5.5 | 7.2 | -3.7 | 4.5 | 6.5 | 5.3 | 3.5 | 8.3 | 6.1 | 0.6 | -4.1 | 9.0 | 5.3 | 18.0 |
| Dec-25 | 5.6 | 3.2 | 7.5 | -20.1 | 3.9 | 6.2 | 6.9 | 3.4 | 7.7 | 4.9 | 0.6 | -4.3 | 9.9 | 5.6 | 19.3 |
| Jan-26 | 5.8 | 3.9 | 7.5 | -19.7 | 3.7 | 6.1 | 7.3 | 3.2 | 7.1 | 2.6 | 0.6 | -4.4 | 10.1 | 4.9 | 21.0 |
| Feb-26 | 7.0 | 5.8 | 6.9 | -2.6 | 2.9 | 6.2 | 9.7 | 3.5 | 7.2 | 0.4 | 0.6 | -4.6 | 9.6 | 4.9 | 23.0 |
| Mar-26 | 7.3 | 3.6 | 5.0 | -6.9 | 2.3 | 5.8 | 11.5 | 3.9 | 7.4 | 12.5 | 0.8 | -4.1 | 9.0 | 5.1 | 21.6 |
| Apr-26 | 10.9 | 7.6 | 7.3 | 10.3 | 2.0 | 6.2 | 16.9 | 3.8 | 7.1 | 29.9 | 0.8 | -5.1 | 8.3 | 5.3 | 18.3 |
| 12- Month Moving Average | | | | | | | | | | | | | | | |
| Apr-25 | 5.9 | -1.1 | -1.7 | 3.1 | 6.2 | 15.0 | 12.1 | 7.1 | 15.3 | 0.7 | 8.3 | 8.2 | 12.3 | 9.0 | 13.1 |
| May-25 | 5.2 | -0.8 | -1.2 | 1.6 | 6.6 | 14.2 | 9.3 | 6.3 | 14.7 | -0.4 | 7.2 | 7.6 | 11.8 | 8.5 | 13.2 |
| Jun-25 | 4.5 | -0.7 | -0.7 | -0.7 | 6.6 | 13.5 | 6.5 | 5.6 | 14.1 | -1.1 | 6.1 | 6.7 | 11.3 | 8.2 | 13.3 |
| Jul-25 | 4.0 | -0.7 | -0.3 | -3.5 | 6.3 | 12.7 | 4.9 | 5.0 | 13.5 | -1.7 | 5.0 | 5.7 | 10.9 | 7.9 | 13.3 |
| Aug-25 | 3.4 | -1.1 | 0.1 | -8.0 | 6.0 | 11.9 | 3.6 | 4.6 | 12.9 | -1.8 | 4.0 | 4.8 | 10.7 | 7.7 | 13.6 |
| Sep-25 | 3.4 | -0.6 | 0.9 | -9.6 | 5.7 | 11.3 | 2.5 | 4.4 | 12.6 | -0.8 | 3.1 | 4.0 | 10.6 | 7.4 | 13.8 |
| Oct-25 | 3.3 | -0.2 | 1.6 | -10.6 | 5.4 | 10.8 | 1.4 | 4.2 | 12.4 | 0.3 | 2.1 | 3.0 | 10.6 | 7.3 | 14.2 |
| Nov-25 | 3.4 | 0.3 | 2.3 | -11.4 | 5.4 | 10.1 | 1.3 | 4.0 | 12.0 | 1.0 | 1.3 | 2.0 | 10.5 | 7.0 | 14.7 |
| Dec-25 | 3.6 | 0.5 | 3.1 | -13.9 | 5.2 | 9.4 | 1.6 | 3.9 | 11.5 | 1.6 | 0.4 | 1.0 | 10.5 | 6.8 | 15.3 |
| Jan-26 | 3.8 | 1.1 | 3.9 | -14.6 | 5.1 | 8.8 | 2.0 | 3.7 | 10.9 | 1.8 | 0.4 | 0.0 | 10.4 | 6.6 | 16.0 |
| Feb-26 | 4.3 | 1.9 | 4.6 | -13.4 | 4.7 | 8.2 | 2.9 | 3.7 | 10.3 | 1.9 | 0.5 | -1.1 | 10.3 | 6.4 | 16.9 |
| Mar-26 | 4.8 | 2.7 | 5.1 | -11.2 | 4.3 | 7.6 | 4.0 | 3.7 | 9.8 | 3.0 | 0.5 | -2.0 | 10.1 | 6.2 | 17.6 |
| Apr-26 | 5.7 | 3.8 | 5.7 | -8.3 | 3.8 | 7.3 | 5.6 | 3.7 | 9.2 | 5.9 | 0.6 | -3.1 | 9.9 | 6.1 | 17.9 |
| Period Average (Since July) | | | | | | | | | | | | | | | |
| Apr-25 | 4.7 | -1.3 | -1.7 | 1.0 | 6.6 | 14.4 | 8.5 | 6.0 | 14.5 | -1.1 | 7.3 | 8.0 | 11.6 | 8.2 | 12.8 |
| May-25 | 4.6 | -1.0 | -1.1 | 0.2 | 6.7 | 13.9 | 7.4 | 5.8 | 14.3 | -1.2 | 6.6 | 7.4 | 11.4 | 8.2 | 13.1 |
| Jun-25 | 4.5 | -0.7 | -0.7 | -0.7 | 6.6 | 13.5 | 6.5 | 5.6 | 14.1 | -1.1 | 6.1 | 6.7 | 11.3 | 8.2 | 13.3 |
| Jul-25 | 4.1 | 0.9 | 2.6 | -8.2 | 3.7 | 8.4 | 3.6 | 3.3 | 10.8 | 2.7 | 0.5 | -1.5 | 10.2 | 7.7 | 14.9 |
| Aug-25 | 3.6 | -0.5 | 2.3 | -15.0 | 3.6 | 8.2 | 3.7 | 3.4 | 10.7 | 2.6 | 0.5 | -1.9 | 10.6 | 7.4 | 14.6 |
| Sep-25 | 4.3 | 1.4 | 3.7 | -11.4 | 3.5 | 8.2 | 4.0 | 3.7 | 10.7 | 3.1 | 0.5 | -2.1 | 10.6 | 7.0 | 14.7 |
| Oct-25 | 4.8 | 2.4 | 4.4 | -8.1 | 3.5 | 8.1 | 4.0 | 3.7 | 10.4 | 4.0 | 0.5 | -2.5 | 10.6 | 6.8 | 15.6 |
| Nov-25 | 5.1 | 3.1 | 4.9 | -7.2 | 3.7 | 7.8 | 4.3 | 3.7 | 10.0 | 4.4 | 0.5 | -2.8 | 10.3 | 6.5 | 16.1 |
| Dec-25 | 5.2 | 3.1 | 5.4 | -9.3 | 3.7 | 7.5 | 4.7 | 3.6 | 9.6 | 4.5 | 0.5 | -3.1 | 10.2 | 6.3 | 16.6 |
| Jan-26 | 5.2 | 3.2 | 5.7 | -10.6 | 3.7 | 7.3 | 5.1 | 3.6 | 9.2 | 4.2 | 0.5 | -3.3 | 10.2 | 6.1 | 17.3 |
| Feb-26 | 5.5 | 3.5 | 5.8 | -9.9 | 3.6 | 7.2 | 5.7 | 3.6 | 9.0 | 3.8 | 0.6 | -3.4 | 10.1 | 6.0 | 18.0 |
| Mar-26 | 5.7 | 3.5 | 5.7 | -9.6 | 3.5 | 7.0 | 6.3 | 3.6 | 8.8 | 4.7 | 0.6 | -3.5 | 10.0 | 5.9 | 18.4 |
| Apr-26 | 6.2 | 3.9 | 5.9 | -7.9 | 3.3 | 6.9 | 7.3 | 3.6 | 8.6 | 7.3 | 0.6 | -3.7 | 9.8 | 5.8 | 18.4 |
| Month-on-Month | | | | | | | | | | | | | | | |
| Apr-25 | -0.8 | -2.1 | -2.0 | -2.7 | 0.4 | 0.4 | -2.3 | 0.6 | 0.6 | 0.0 | 0.1 | 0.9 | 3.7 | 0.6 | 2.3 |
| May-25 | -0.2 | -0.2 | -0.1 | -1.0 | 0.1 | 1.0 | -1.2 | 0.3 | 0.4 | -0.2 | 0.0 | -4.7 | 0.7 | 0.2 | 1.7 |
| Jun-25 | 0.2 | -0.4 | -1.1 | 5.3 | 0.3 | 0.3 | 0.7 | 0.1 | 0.9 | 0.9 | 0.1 | 0.2 | 0.3 | 0.7 | 0.6 |
| Jul-25 | 2.9 | 3.0 | 1.1 | 15.9 | 0.2 | 0.3 | 7.1 | 0.2 | 0.4 | 3.5 | 0.1 | 0.1 | 0.2 | 0.4 | 0.9 |
| Aug-25 | -0.6 | -1.2 | 0.6 | -12.1 | 0.1 | 0.2 | -1.1 | 0.3 | 0.7 | -1.0 | 0.0 | 0.3 | 1.3 | 0.2 | 0.7 |
| Sep-25 | 2.1 | 5.5 | 4.4 | 12.7 | 0.1 | 0.4 | -0.2 | 0.3 | 0.8 | -0.3 | 0.1 | -0.3 | 0.2 | 0.7 | 1.7 |
| Oct-25 | 1.7 | 2.7 | 0.8 | 14.9 | 0.0 | 0.3 | 1.5 | 0.5 | 0.7 | 0.9 | 0.2 | -0.8 | 0.1 | 0.4 | 4.1 |
| Nov-25 | 0.4 | -0.2 | 0.9 | -6.8 | 0.4 | 0.7 | 1.5 | 0.3 | 1.1 | 0.2 | 0.0 | 0.1 | 0.0 | 0.3 | 0.6 |
| Dec-25 | -0.4 | -2.2 | 0.4 | -17.7 | 0.0 | 0.3 | 0.7 | 0.1 | 0.4 | -0.1 | 0.0 | 0.1 | 0.9 | 0.6 | 1.6 |
| Jan-26 | 0.4 | 0.1 | 1.9 | -13.4 | 0.1 | 0.4 | 1.1 | 0.3 | 0.4 | -1.4 | 0.0 | 0.1 | 0.2 | 0.3 | 2.3 |
| Feb-26 | 0.3 | -0.9 | -1.2 | 2.0 | 0.4 | 0.3 | 1.9 | 0.2 | 0.6 | -1.9 | 0.0 | 0.0 | 0.1 | 0.3 | 3.4 |
| Mar-26 | 1.2 | -0.3 | -0.7 | 2.8 | 0.3 | 1.0 | 1.5 | 0.6 | 0.2 | 11.8 | 0.2 | 0.0 | 1.1 | 0.4 | 0.1 |
| Apr-26 | 2.5 | 1.8 | 0.1 | 15.3 | 0.2 | 0.8 | 2.4 | 0.5 | 0.3 | 15.5 | 0.1 | -0.1 | 3.0 | 0.7 | -0.5 |
| 3-Years Average (in current month during FY24-FY26) | | | | | | | | | | | | | | | |
| YoY | 9.5 | 4.2 | 4.4 | 4.0 | 4.4 | 11.5 | 16.6 | 8.5 | 13.3 | 12.8 | 5.1 | 4.9 | 11.5 | 10.4 | 17.2 |
| MoM | 0.4 | -0.9 | -1.1 | 1.7 | 0.2 | 1.9 | -0.6 | 0.5 | 0.4 | 6.1 | 0.1 | 0.5 | 3.8 | 0.8 | 1.3 |

Table 7.8: Urban CPI Inflation by Groups

| Period | General | Food and Non-Alcoholic Beverages | Non-Perishable Food Items | Perishable Food Items | Alcoholic Beverages, Tobacco | Clothing and Footwear | Housing, Water, Elec., Gas and Other Fuels | Furnishing and Household Equipment Maintenance | Health | Transport | Communication | Recreation and Culture | Education | Restaurants and Hotels | Misc. Goods and Services |
|--|---------|----------------------------------|---------------------------|-----------------------|------------------------------|-----------------------|--|--|--------|-----------|---------------|------------------------|-----------|------------------------|--------------------------|
| Year-on-Year | | | | | | | | | | | | | | | |
| Apr-25 | 0.5 | -3.6 | 0.2 | -24.2 | 8.2 | 8.8 | -2.8 | 3.9 | 15.4 | -3.5 | -0.3 | 5.7 | 9.8 | 5.1 | 12.9 |
| May-25 | 3.5 | 4.8 | 6.5 | -5.9 | 8.0 | 10.0 | -2.8 | 3.9 | 12.8 | -2.5 | 0.4 | -0.3 | 9.2 | 6.6 | 14.6 |
| Jun-25 | 3.0 | 3.5 | 5.3 | -6.9 | 4.2 | 9.0 | -3.5 | 3.6 | 11.7 | 0.5 | 0.2 | -1.8 | 9.2 | 7.5 | 14.4 |
| Jul-25 | 4.4 | 1.2 | 3.0 | -8.4 | 3.1 | 8.3 | 4.9 | 3.3 | 10.0 | 2.8 | 0.3 | -2.3 | 9.3 | 7.1 | 14.0 |
| Aug-25 | 3.5 | -2.0 | 2.1 | -22.8 | 3.2 | 8.1 | 5.3 | 3.8 | 9.7 | 2.3 | 0.3 | -3.1 | 10.6 | 6.7 | 13.9 |
| Sep-25 | 5.7 | 4.2 | 5.7 | -4.4 | 3.1 | 7.9 | 5.7 | 4.7 | 9.0 | 4.1 | 0.3 | -3.4 | 10.5 | 5.5 | 14.7 |
| Oct-25 | 6.0 | 4.3 | 5.0 | 0.7 | 3.1 | 8.1 | 5.5 | 4.1 | 8.2 | 6.9 | 0.4 | -4.2 | 10.4 | 5.5 | 18.0 |
| Nov-25 | 6.1 | 5.2 | 6.5 | -2.0 | 4.9 | 5.7 | 6.4 | 3.2 | 7.0 | 6.2 | 0.5 | -4.3 | 8.2 | 4.5 | 17.6 |
| Dec-25 | 5.8 | 2.9 | 7.0 | -19.2 | 4.3 | 5.6 | 8.0 | 3.5 | 6.6 | 5.0 | 0.5 | -4.4 | 9.1 | 5.0 | 19.0 |
| Jan-26 | 5.8 | 3.2 | 6.2 | -16.3 | 4.1 | 5.5 | 8.3 | 3.1 | 6.2 | 2.8 | 0.5 | -4.4 | 9.1 | 4.3 | 21.1 |
| Feb-26 | 6.8 | 4.6 | 5.2 | -0.4 | 3.5 | 5.7 | 10.5 | 3.2 | 6.2 | 0.3 | 0.5 | -4.5 | 8.8 | 4.4 | 23.3 |
| Mar-26 | 7.4 | 2.6 | 3.7 | -5.1 | 2.8 | 5.2 | 12.1 | 3.7 | 6.5 | 12.8 | 0.6 | -3.6 | 8.9 | 4.8 | 21.5 |
| Apr-26 | 11.1 | 7.5 | 6.7 | 12.9 | 2.1 | 5.5 | 16.2 | 3.5 | 6.2 | 32.2 | 0.8 | -4.5 | 7.7 | 5.1 | 18.1 |
| 12- Month Moving Average | | | | | | | | | | | | | | | |
| Apr-25 | 7.1 | 0.2 | -0.3 | 3.6 | 6.2 | 15.2 | 14.8 | 6.1 | 16.6 | 0.6 | 7.2 | 6.3 | 9.2 | 7.5 | 11.5 |
| May-25 | 6.2 | 0.5 | 0.2 | 2.3 | 6.7 | 14.6 | 11.4 | 5.5 | 16.0 | -0.3 | 6.2 | 5.7 | 8.9 | 7.0 | 11.7 |
| Jun-25 | 5.3 | 0.7 | 0.7 | 0.5 | 6.5 | 13.9 | 8.1 | 4.9 | 15.2 | -0.9 | 5.2 | 4.8 | 8.5 | 6.9 | 11.8 |
| Jul-25 | 4.6 | 0.5 | 1.0 | -2.3 | 6.1 | 13.1 | 6.2 | 4.4 | 14.3 | -1.4 | 4.3 | 3.9 | 8.2 | 6.7 | 11.9 |
| Aug-25 | 4.0 | 0.0 | 1.3 | -7.2 | 5.8 | 12.4 | 4.5 | 4.1 | 13.6 | -1.5 | 3.4 | 3.1 | 8.3 | 6.6 | 12.3 |
| Sep-25 | 3.7 | 0.3 | 1.9 | -8.8 | 5.5 | 11.8 | 3.1 | 4.1 | 13.0 | -0.6 | 2.5 | 2.4 | 8.4 | 6.4 | 12.6 |
| Oct-25 | 3.5 | 0.5 | 2.4 | -9.9 | 5.2 | 11.3 | 1.8 | 4.1 | 12.6 | 0.4 | 1.7 | 1.5 | 8.8 | 6.3 | 13.1 |
| Nov-25 | 3.6 | 0.9 | 2.9 | -10.5 | 5.1 | 10.5 | 1.7 | 3.9 | 11.9 | 1.1 | 0.9 | 0.7 | 8.8 | 6.1 | 13.7 |
| Dec-25 | 3.7 | 1.0 | 3.5 | -12.9 | 5.1 | 9.6 | 2.1 | 3.8 | 11.2 | 1.6 | 0.2 | -0.2 | 9.0 | 6.0 | 14.4 |
| Jan-26 | 3.9 | 1.5 | 4.1 | -13.3 | 5.0 | 8.8 | 2.6 | 3.7 | 10.4 | 1.8 | 0.2 | -1.0 | 9.2 | 5.8 | 15.3 |
| Feb-26 | 4.4 | 2.0 | 4.5 | -12.1 | 4.7 | 8.1 | 3.6 | 3.6 | 9.7 | 1.9 | 0.3 | -1.9 | 9.4 | 5.6 | 16.4 |
| Mar-26 | 4.9 | 2.6 | 4.7 | -10.0 | 4.3 | 7.3 | 4.8 | 3.7 | 9.0 | 3.1 | 0.4 | -2.6 | 9.4 | 5.6 | 17.2 |
| Apr-26 | 5.8 | 3.5 | 5.2 | -7.0 | 3.8 | 7.0 | 6.4 | 3.6 | 8.3 | 6.1 | 0.4 | -3.4 | 9.2 | 5.6 | 17.6 |
| Period Average (Since July) | | | | | | | | | | | | | | | |
| Apr-25 | 5.7 | 0.0 | -0.3 | 1.8 | 6.6 | 14.9 | 10.5 | 5.1 | 15.8 | -0.9 | 6.3 | 6.0 | 8.4 | 6.8 | 11.3 |
| May-25 | 5.5 | 0.4 | 0.3 | 1.2 | 6.7 | 14.4 | 9.2 | 5.0 | 15.5 | -1.0 | 5.7 | 5.4 | 8.5 | 6.8 | 11.6 |
| Jun-25 | 5.3 | 0.7 | 0.7 | 0.5 | 6.5 | 13.9 | 8.1 | 4.9 | 15.2 | -0.9 | 5.2 | 4.8 | 8.5 | 6.9 | 11.8 |
| Jul-25 | 4.4 | 1.2 | 3.0 | -8.4 | 3.1 | 8.3 | 4.9 | 3.3 | 10.0 | 2.8 | 0.3 | -2.3 | 9.3 | 7.1 | 14.0 |
| Aug-25 | 3.9 | -0.4 | 2.5 | -15.7 | 3.1 | 8.2 | 5.1 | 3.6 | 9.9 | 2.6 | 0.3 | -2.7 | 10.0 | 6.9 | 14.0 |
| Sep-25 | 4.5 | 1.1 | 3.6 | -12.1 | 3.1 | 8.1 | 5.3 | 3.9 | 9.6 | 3.1 | 0.3 | -2.9 | 10.2 | 6.4 | 14.2 |
| Oct-25 | 4.9 | 1.9 | 3.9 | -8.9 | 3.1 | 8.1 | 5.4 | 4.0 | 9.2 | 4.0 | 0.3 | -3.2 | 10.2 | 6.2 | 15.2 |
| Nov-25 | 5.1 | 2.6 | 4.5 | -7.5 | 3.5 | 7.6 | 5.6 | 3.8 | 8.8 | 4.4 | 0.4 | -3.5 | 9.8 | 5.8 | 15.7 |
| Dec-25 | 5.2 | 2.6 | 4.9 | -9.5 | 3.6 | 7.3 | 6.0 | 3.8 | 8.4 | 4.5 | 0.4 | -3.6 | 9.7 | 5.7 | 16.2 |
| Jan-26 | 5.3 | 2.7 | 5.1 | -10.3 | 3.7 | 7.0 | 6.3 | 3.7 | 8.1 | 4.3 | 0.4 | -3.7 | 9.6 | 5.5 | 16.9 |
| Feb-26 | 5.5 | 3.0 | 5.1 | -9.3 | 3.7 | 6.8 | 6.8 | 3.6 | 7.8 | 3.8 | 0.4 | -3.8 | 9.5 | 5.3 | 17.8 |
| Mar-26 | 5.7 | 2.9 | 4.9 | -8.9 | 3.6 | 6.7 | 7.4 | 3.6 | 7.7 | 4.8 | 0.4 | -3.8 | 9.4 | 5.3 | 18.2 |
| Apr-26 | 6.3 | 3.4 | 5.1 | -7.1 | 3.4 | 6.5 | 8.3 | 3.6 | 7.5 | 7.5 | 0.5 | -3.9 | 9.3 | 5.3 | 18.2 |
| Month-on-Month | | | | | | | | | | | | | | | |
| Apr-25 | -0.7 | -2.0 | -2.0 | -2.4 | 0.8 | 0.5 | -2.0 | 0.9 | 0.8 | -0.1 | 0.0 | 0.9 | 4.1 | 0.6 | 2.4 |
| May-25 | 0.1 | 0.7 | 0.7 | 1.0 | 0.0 | 1.4 | -1.2 | 0.1 | 0.1 | -0.1 | 0.0 | -4.2 | 0.4 | 0.1 | 1.6 |
| Jun-25 | 0.1 | -0.8 | -1.6 | 5.4 | 0.2 | 0.1 | 0.7 | 0.0 | 0.8 | 1.0 | 0.1 | -0.1 | 0.1 | 0.3 | 0.4 |
| Jul-25 | 3.4 | 2.9 | 1.4 | 13.5 | 0.3 | 0.1 | 8.7 | 0.2 | 0.2 | 3.8 | 0.0 | 0.1 | 0.1 | 0.1 | 1.1 |
| Aug-25 | -0.7 | -1.6 | 0.3 | -13.0 | 0.1 | 0.2 | -1.0 | 0.6 | 0.7 | -1.0 | 0.0 | 0.4 | 1.6 | 0.2 | 0.7 |
| Sep-25 | 1.6 | 4.7 | 3.7 | 12.0 | 0.1 | 0.2 | -0.2 | 0.4 | 0.7 | -0.3 | 0.1 | -0.4 | 0.1 | 0.8 | 1.6 |
| Oct-25 | 1.4 | 2.0 | 0.2 | 13.7 | 0.0 | 0.3 | 1.4 | 0.5 | 0.5 | 1.0 | 0.1 | -0.8 | 0.1 | 0.4 | 3.8 |
| Nov-25 | 0.5 | 0.3 | 1.3 | -5.2 | 0.5 | 0.8 | 1.2 | 0.2 | 1.3 | 0.1 | 0.0 | 0.0 | 0.0 | 0.2 | 0.6 |
| Dec-25 | -0.4 | -2.1 | 0.4 | -17.4 | 0.0 | 0.3 | 0.5 | 0.0 | 0.2 | 0.0 | 0.0 | 0.1 | 0.8 | 0.8 | 1.4 |
| Jan-26 | 0.2 | -0.3 | 1.3 | -11.8 | 0.0 | 0.2 | 0.9 | 0.0 | 0.3 | -1.4 | 0.0 | 0.0 | 0.0 | 0.2 | 2.6 |
| Feb-26 | 0.3 | -1.1 | -1.5 | 2.7 | 0.5 | 0.4 | 1.7 | 0.2 | 0.4 | -2.2 | 0.0 | 0.0 | 0.0 | 0.4 | 3.6 |
| Mar-26 | 1.3 | 0.0 | -0.3 | 2.6 | 0.3 | 0.7 | 1.3 | 0.6 | 0.3 | 12.1 | 0.1 | 0.2 | 1.3 | 0.6 | -0.1 |
| Apr-26 | 2.7 | 2.6 | 0.9 | 16.0 | 0.1 | 0.8 | 1.6 | 0.6 | 0.5 | 17.0 | 0.2 | 0.0 | 3.0 | 0.9 | -0.5 |
| 3-Years Average (in current month during FY24-FY26) | | | | | | | | | | | | | | | |
| YoY | 10.3 | 4.8 | 5.0 | 5.0 | 4.4 | 10.6 | 18.9 | 7.6 | 13.3 | 12.7 | 4.7 | 4.0 | 10.3 | 9.6 | 16.2 |
| MoM | 0.7 | -0.4 | -0.5 | 2.0 | 0.3 | 2.6 | -0.6 | 0.6 | 0.5 | 6.5 | 0.1 | 0.5 | 3.2 | 0.9 | 1.2 |

Table 7.9: Rural CPI Inflation by Groups

| Period | General | Food and Non-Alcoholic Beverages | Non-Perishable Food Items | Perishable Food Items | Alcoholic Beverages, Tobacco | Clothing and Footwear | Housing, Water, Elec, Gas and Other Fuels | Furnishing and Household Equipment Maintenance | Health | Transport | Communication | Recreation and Culture | Education | Restaurants and Hotels | Misc. Goods and Services |
|--|---------|----------------------------------|---------------------------|-----------------------|------------------------------|-----------------------|---|--|--------|-----------|---------------|------------------------|-----------|------------------------|--------------------------|
| Year-on-Year | | | | | | | | | | | | | | | |
| Apr-25 | -0.1 | -6.2 | -1.8 | -29.4 | 7.7 | 9.5 | -2.3 | 4.2 | 12.9 | -4.5 | 0.8 | 11.3 | 14.4 | 8.5 | 15.0 |
| May-25 | 3.4 | 1.2 | 3.4 | -13.0 | 7.7 | 9.2 | -1.9 | 3.9 | 12.8 | -2.5 | 0.9 | 4.0 | 13.1 | 8.8 | 16.6 |
| Jun-25 | 3.6 | 1.6 | 4.3 | -14.6 | 6.1 | 8.9 | -2.8 | 3.9 | 12.6 | 0.9 | 1.0 | 0.2 | 12.8 | 9.9 | 16.5 |
| Jul-25 | 3.5 | 0.6 | 2.2 | -8.1 | 4.4 | 8.4 | 0.3 | 3.3 | 11.5 | 2.6 | 0.9 | -0.1 | 13.0 | 8.7 | 16.1 |
| Aug-25 | 2.5 | -1.6 | 1.9 | -20.2 | 4.0 | 8.1 | 0.6 | 3.1 | 11.5 | 2.7 | 0.9 | -0.9 | 11.9 | 8.0 | 15.0 |
| Sep-25 | 5.9 | 6.0 | 7.5 | -2.9 | 3.7 | 8.1 | 1.2 | 3.3 | 12.3 | 4.4 | 0.6 | -1.6 | 11.3 | 7.3 | 15.2 |
| Oct-25 | 6.6 | 6.9 | 7.7 | 2.7 | 3.6 | 8.0 | 1.2 | 3.8 | 11.3 | 6.4 | 0.9 | -2.9 | 11.2 | 7.1 | 18.4 |
| Nov-25 | 6.3 | 5.9 | 8.1 | -5.6 | 4.0 | 7.5 | 2.8 | 3.9 | 9.7 | 6.0 | 0.9 | -3.7 | 11.2 | 6.9 | 18.6 |
| Dec-25 | 5.4 | 3.6 | 8.1 | -21.1 | 3.5 | 7.0 | 4.2 | 3.2 | 8.9 | 4.8 | 0.9 | -4.2 | 12.3 | 6.7 | 19.7 |
| Jan-26 | 5.8 | 4.7 | 9.0 | -23.4 | 3.2 | 6.8 | 4.9 | 3.4 | 8.1 | 2.4 | 0.8 | -4.4 | 13.0 | 5.9 | 20.9 |
| Feb-26 | 7.3 | 7.2 | 8.8 | -5.0 | 2.2 | 6.7 | 7.6 | 3.9 | 8.2 | 0.5 | 0.8 | -4.7 | 12.3 | 5.9 | 22.6 |
| Mar-26 | 7.2 | 4.6 | 6.4 | -9.0 | 1.8 | 6.5 | 10.0 | 4.2 | 8.3 | 12.0 | 1.1 | -4.8 | 9.6 | 5.7 | 21.8 |
| Apr-26 | 10.6 | 7.8 | 7.9 | 7.2 | 1.9 | 7.0 | 18.3 | 4.3 | 8.0 | 26.3 | 1.0 | -6.1 | 10.0 | 5.6 | 18.7 |
| 12- Month Moving Average | | | | | | | | | | | | | | | |
| Apr-25 | 4.1 | -2.5 | -3.2 | 2.7 | 6.2 | 14.6 | 6.2 | 8.5 | 14.0 | 0.8 | 10.3 | 11.4 | 22.9 | 11.7 | 15.3 |
| May-25 | 3.8 | -2.2 | -2.7 | 0.8 | 6.5 | 13.8 | 4.7 | 7.5 | 13.5 | -0.4 | 9.0 | 10.9 | 21.8 | 11.0 | 15.3 |
| Jun-25 | 3.3 | -2.1 | -2.1 | -2.1 | 6.6 | 13.0 | 2.9 | 6.7 | 13.1 | -1.4 | 7.7 | 9.8 | 20.8 | 10.5 | 15.3 |
| Jul-25 | 3.0 | -2.1 | -1.7 | -4.9 | 6.4 | 12.1 | 2.0 | 5.9 | 12.6 | -2.3 | 6.4 | 8.7 | 19.7 | 10.1 | 15.2 |
| Aug-25 | 2.6 | -2.3 | -1.2 | -9.0 | 6.2 | 11.3 | 1.4 | 5.2 | 12.2 | -2.3 | 5.2 | 7.7 | 18.8 | 9.6 | 15.3 |
| Sep-25 | 2.8 | -1.7 | -0.1 | -10.5 | 5.9 | 10.7 | 0.9 | 4.8 | 12.2 | -1.2 | 4.1 | 6.6 | 17.8 | 9.3 | 15.4 |
| Oct-25 | 3.0 | -1.1 | 0.7 | -11.3 | 5.7 | 10.2 | 0.6 | 4.5 | 12.2 | 0.0 | 3.0 | 5.5 | 16.8 | 9.0 | 15.6 |
| Nov-25 | 3.2 | -0.5 | 1.7 | -12.5 | 5.6 | 9.7 | 0.2 | 4.3 | 12.1 | 0.9 | 1.9 | 4.2 | 15.8 | 8.7 | 16.0 |
| Dec-25 | 3.3 | -0.1 | 2.6 | -14.9 | 5.4 | 9.2 | 0.2 | 4.0 | 11.8 | 1.5 | 0.8 | 2.9 | 15.0 | 8.4 | 16.4 |
| Jan-26 | 3.7 | 0.7 | 3.7 | -16.0 | 5.2 | 8.7 | 0.6 | 3.8 | 11.4 | 1.7 | 0.8 | 1.6 | 14.2 | 8.0 | 16.9 |
| Feb-26 | 4.2 | 1.8 | 4.7 | -14.8 | 4.8 | 8.3 | 1.2 | 3.7 | 11.0 | 1.8 | 0.8 | 0.2 | 13.3 | 7.7 | 17.6 |
| Mar-26 | 4.8 | 2.9 | 5.5 | -12.7 | 4.3 | 7.9 | 2.2 | 3.7 | 10.6 | 2.9 | 0.9 | -1.1 | 12.1 | 7.4 | 18.1 |
| Apr-26 | 5.7 | 4.0 | 6.3 | -9.7 | 3.8 | 7.7 | 3.9 | 3.7 | 10.2 | 5.5 | 0.9 | -2.5 | 11.8 | 7.2 | 18.4 |
| Period Average (Since July) | | | | | | | | | | | | | | | |
| Apr-25 | 3.3 | -2.8 | -3.3 | 0.2 | 6.5 | 13.9 | 4.0 | 7.3 | 13.2 | -1.5 | 9.2 | 11.5 | 22.6 | 10.8 | 15.0 |
| May-25 | 3.3 | -2.4 | -2.7 | -0.9 | 6.7 | 13.4 | 3.4 | 6.9 | 13.2 | -1.6 | 8.3 | 10.8 | 21.6 | 10.6 | 15.2 |
| Jun-25 | 3.3 | -2.1 | -2.1 | -2.1 | 6.6 | 13.0 | 2.9 | 6.7 | 13.1 | -1.4 | 7.7 | 9.8 | 20.8 | 10.5 | 15.3 |
| Jul-25 | 3.5 | 0.6 | 2.2 | -8.1 | 4.4 | 8.4 | 0.3 | 3.3 | 11.5 | 2.6 | 0.9 | -0.1 | 13.0 | 8.7 | 16.1 |
| Aug-25 | 3.0 | -0.5 | 2.0 | -14.2 | 4.2 | 8.3 | 0.4 | 3.2 | 11.5 | 2.7 | 0.9 | -0.5 | 12.4 | 8.4 | 15.6 |
| Sep-25 | 4.0 | 1.6 | 3.8 | -10.6 | 4.0 | 8.2 | 0.7 | 3.3 | 11.8 | 3.3 | 0.8 | -0.9 | 12.1 | 8.0 | 15.4 |
| Oct-25 | 4.6 | 3.0 | 4.8 | -7.1 | 3.9 | 8.1 | 0.8 | 3.4 | 11.6 | 4.0 | 0.8 | -1.4 | 11.8 | 7.8 | 16.2 |
| Nov-25 | 5.0 | 3.6 | 5.5 | -6.8 | 3.9 | 8.0 | 1.2 | 3.5 | 11.2 | 4.4 | 0.8 | -1.8 | 11.7 | 7.6 | 16.7 |
| Dec-25 | 5.0 | 3.6 | 5.9 | -9.2 | 3.8 | 7.8 | 1.7 | 3.5 | 10.8 | 4.5 | 0.8 | -2.2 | 11.8 | 7.4 | 17.2 |
| Jan-26 | 5.2 | 3.7 | 6.4 | -11.0 | 3.7 | 7.7 | 2.2 | 3.4 | 10.4 | 4.2 | 0.8 | -2.5 | 12.0 | 7.2 | 17.7 |
| Feb-26 | 5.4 | 4.2 | 6.7 | -10.4 | 3.6 | 7.6 | 2.9 | 3.5 | 10.1 | 3.7 | 0.8 | -2.8 | 12.0 | 7.0 | 18.4 |
| Mar-26 | 5.6 | 4.2 | 6.6 | -10.3 | 3.4 | 7.4 | 3.7 | 3.6 | 9.9 | 4.7 | 0.9 | -3.0 | 11.7 | 6.9 | 18.8 |
| Apr-26 | 6.1 | 4.6 | 6.8 | -8.9 | 3.2 | 7.4 | 5.1 | 3.7 | 9.7 | 6.8 | 0.9 | -3.4 | 11.6 | 6.8 | 18.8 |
| Month-on-Month | | | | | | | | | | | | | | | |
| Apr-25 | -1.0 | -2.1 | -2.0 | -3.0 | 0.1 | 0.3 | -3.0 | 0.3 | 0.4 | 0.2 | 0.2 | 0.9 | 2.4 | 0.6 | 2.1 |
| May-25 | -0.5 | -1.2 | -0.9 | -3.4 | 0.2 | 0.5 | -1.3 | 0.4 | 0.6 | -0.3 | 0.0 | -5.6 | 1.6 | 0.3 | 1.8 |
| Jun-25 | 0.5 | 0.1 | -0.6 | 5.1 | 0.5 | 0.5 | 0.7 | 0.3 | 1.0 | 0.9 | 0.1 | 0.6 | 0.8 | 1.3 | 0.9 |
| Jul-25 | 2.2 | 3.0 | 0.8 | 18.9 | 0.1 | 0.6 | 3.4 | 0.1 | 0.5 | 3.2 | 0.2 | 0.2 | 0.5 | 0.8 | 0.6 |
| Aug-25 | -0.5 | -0.8 | 0.9 | -11.0 | 0.1 | 0.2 | -1.2 | 0.1 | 0.7 | -0.9 | 0.0 | 0.1 | 0.3 | 0.2 | 0.5 |
| Sep-25 | 2.8 | 6.3 | 5.2 | 13.4 | 0.2 | 0.7 | 0.0 | 0.2 | 1.0 | -0.2 | 0.0 | -0.2 | 0.6 | 0.5 | 1.7 |
| Oct-25 | 2.1 | 3.4 | 1.4 | 16.2 | -0.1 | 0.4 | 1.7 | 0.4 | 0.8 | 0.6 | 0.3 | -0.9 | 0.2 | 0.5 | 4.4 |
| Nov-25 | 0.2 | -0.8 | 0.6 | -8.5 | 0.3 | 0.6 | 2.2 | 0.6 | 0.9 | 0.3 | 0.1 | 0.2 | 0.0 | 0.5 | 0.6 |
| Dec-25 | -0.6 | -2.2 | 0.4 | -18.1 | 0.0 | 0.3 | 1.1 | 0.2 | 0.6 | -0.2 | 0.0 | 0.1 | 1.0 | 0.2 | 1.9 |
| Jan-26 | 0.6 | 0.4 | 2.5 | -15.2 | 0.1 | 0.5 | 1.6 | 0.7 | 0.6 | -1.4 | 0.0 | 0.2 | 1.0 | 0.5 | 1.9 |
| Feb-26 | 0.3 | -0.6 | -0.8 | 1.1 | 0.3 | 0.3 | 2.2 | 0.2 | 0.9 | -1.4 | 0.0 | 0.1 | 0.2 | 0.3 | 3.0 |
| Mar-26 | 1.0 | -0.7 | -1.1 | 3.0 | 0.2 | 1.4 | 2.3 | 0.5 | 0.1 | 11.2 | 0.3 | -0.3 | 0.7 | 0.0 | 0.4 |
| Apr-26 | 2.1 | 0.9 | -0.6 | 14.3 | 0.2 | 0.8 | 4.4 | 0.5 | 0.1 | 13.0 | 0.0 | -0.4 | 2.8 | 0.4 | -0.5 |
| 3-Years Average (in current month during FY24-FY26) | | | | | | | | | | | | | | | |
| YoY | 8.3 | 3.4 | 3.8 | 2.9 | 4.5 | 12.5 | 12.1 | 9.9 | 13.3 | 13.1 | 6.1 | 6.4 | 15.7 | 11.7 | 18.6 |
| MoM | 0.1 | -1.4 | -1.6 | 1.5 | 0.1 | 1.1 | -0.4 | 0.4 | 0.3 | 5.5 | 0.1 | 0.6 | 5.9 | 0.7 | 1.4 |

Technical Notes

1. All the three measures of inflation, viz. CPI (National, Urban and Rural), WPI and SPI are computed by the following Laspeyres Index formula:

$$I_t = \sum_j w_0^j \left(\frac{P_t^j}{P_0^j} \right)$$

Where I_t is price index, w_0^j is weight of commodity j in the overall basket, P_t^j is price of commodity j in period t and P_0^j is its price in the base year.

2. Base year for all the indices is the year 2015-16.
3. CPI baskets for urban and rural areas contains 356 and 244 consumers' items respectively; WPI basket contains 419 items; SPI contains 51 items.
4. YoY inflation is the percent change of an index in a given month over the index in the same month of the last year. It is computed as follows:

$$\pi_t = \left(\frac{I_t}{I_{t-12}} - 1 \right) \times 100$$

5. Period average inflation is the percent change of the average index during the period from July to the given month of a fiscal year over the average index during the corresponding period of the last year. It is computed as follows:

$$\bar{\pi}_t = \left(\frac{\sum_{i=0}^{t-v} I_{t-i}}{\sum_{i=0}^{t-12-v} I_{t-12-i}} - 1 \right) \times 100$$

Where v is the serial number of the month of December of current fiscal year in a given time series.

6. Monthly inflation is the percent change of an index in a given month over the index in the preceding month. It is computed as follows:

$$\pi_t = \left(\frac{I_t}{I_{t-1}} - 1 \right) \times 100$$

7. 12-month moving average inflation (Long-run trend inflation) is the percent change of 12-month moving average of a price index; it is computed as follows:

$$\tilde{\pi}_t = \left(\frac{\sum_{i=0}^{11} I_{t-i}}{\sum_{i=0}^{11} I_{t-12-i}} - 1 \right) \times 100$$

8. Core Inflation is defined as the persistent component of measured inflation that excludes volatile and controlled prices. It reflects the normal supply and demand conditions in the economy. Core inflation is computed by the following two methods i.e. NFNE inflation and trimmed inflation:

- a) Non-food, Non-energy inflation (NFNE inflation); it is computed by excluding food group and energy items (kerosene oil, petrol, diesel, CNG, electricity and natural gas) from the CPI basket.

- b) 20% trimmed-mean inflation; it is computed through the following steps:
- i. All CPI items are arranged in ascending order according to YoY/12-month moving average/monthly/period average changes in their price indices in a given month.
 - ii. 20 percent of the items showing extreme changes are excluded with 10 percent of the items at the top of the list (corresponding to cumulative weight of 90% or more) and 10 percent of the items at the bottom of the list (corresponding to cumulative weight of 10 percent or less).
 - iii. The weighted mean of the changes in price indices of the rest of the items is core inflation.

9. Weighted contribution of different items (or sub-groups) to total inflation is worked out as below:

Let the overall index (I_t) is the weighted average of price indices of individual items or sub-groups (I_{it}), i.e.

$$I_t = \sum_i w_i \cdot I_{it}$$

The weighted contribution of a single item (or a sub-group) to overall inflation is defined as:

$$C_{it} = \alpha_{it-12} \cdot w_i \cdot \left(\frac{\pi_{it}}{\pi_t} \right)$$

Where C_{it} : Contribution of i^{th} item to the overall inflation

$\alpha_{it-12} = \frac{I_{it-12}}{I_{t-12}}$; i.e. ratio of item's index to overall index in the reference month

w_i : Weights of i^{th} item

π_{it} : Inflation of i^{th} item

π_t : Overall inflation

List of Abbreviations

| Abbreviation | Stands for |
|---------------------|--------------------------------------|
| CIF | Cost, Insurance, and Freight |
| CNG | Compressed Natural Gas |
| CPI | Consumer Price Index |
| FY | Fiscal year |
| ISSN | International Standard Serial Number |
| KG | Kilogram |
| MT | Metric Ton |
| LB | Pound |
| PBS | Pakistan Bureau of Statistics |
| SPI | Sensitive Price Indicator |
| WPI | Wholesale Price Index |
| 12MMA | 12 Month Moving Average |